

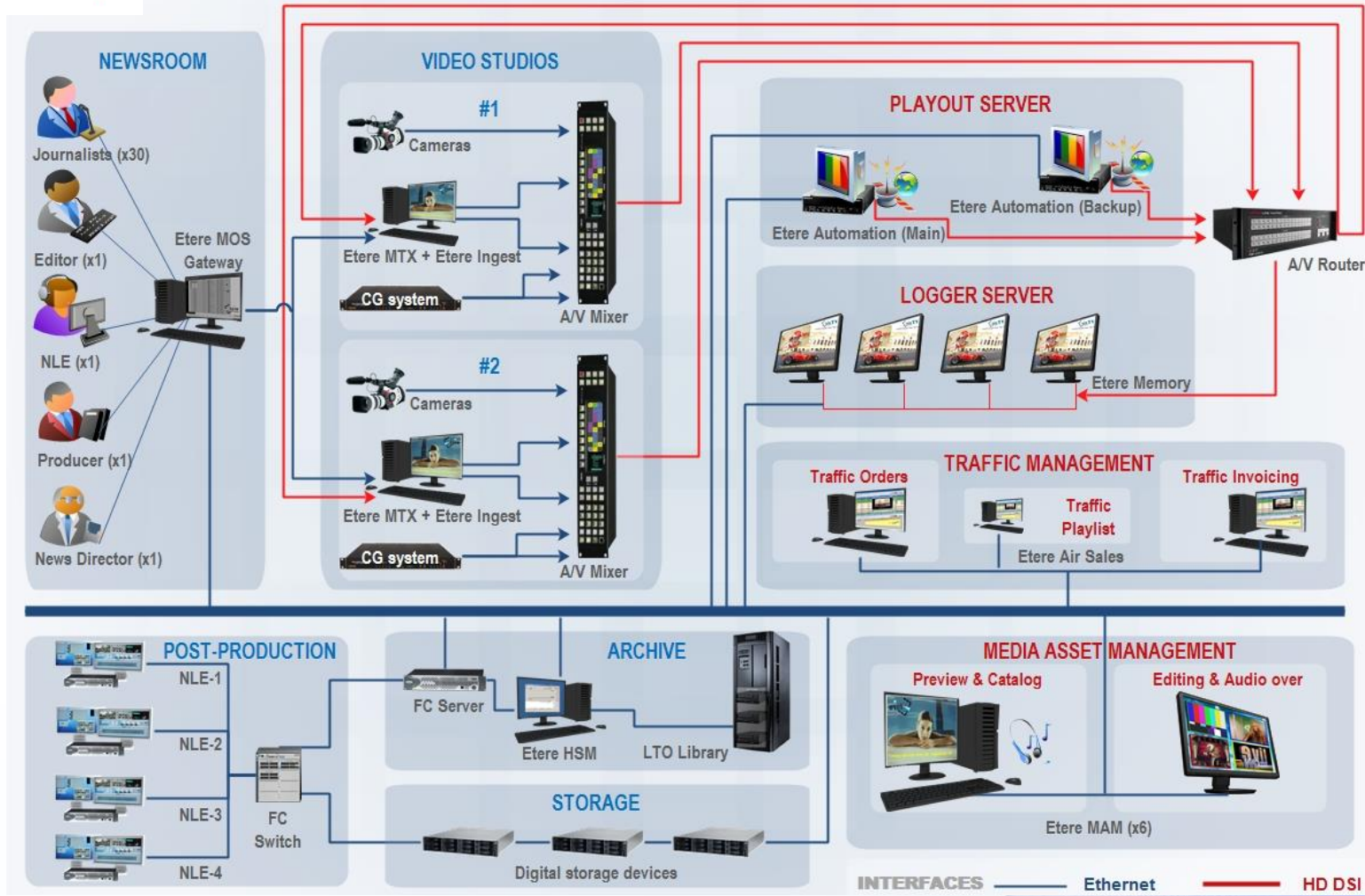
Technologies for the News



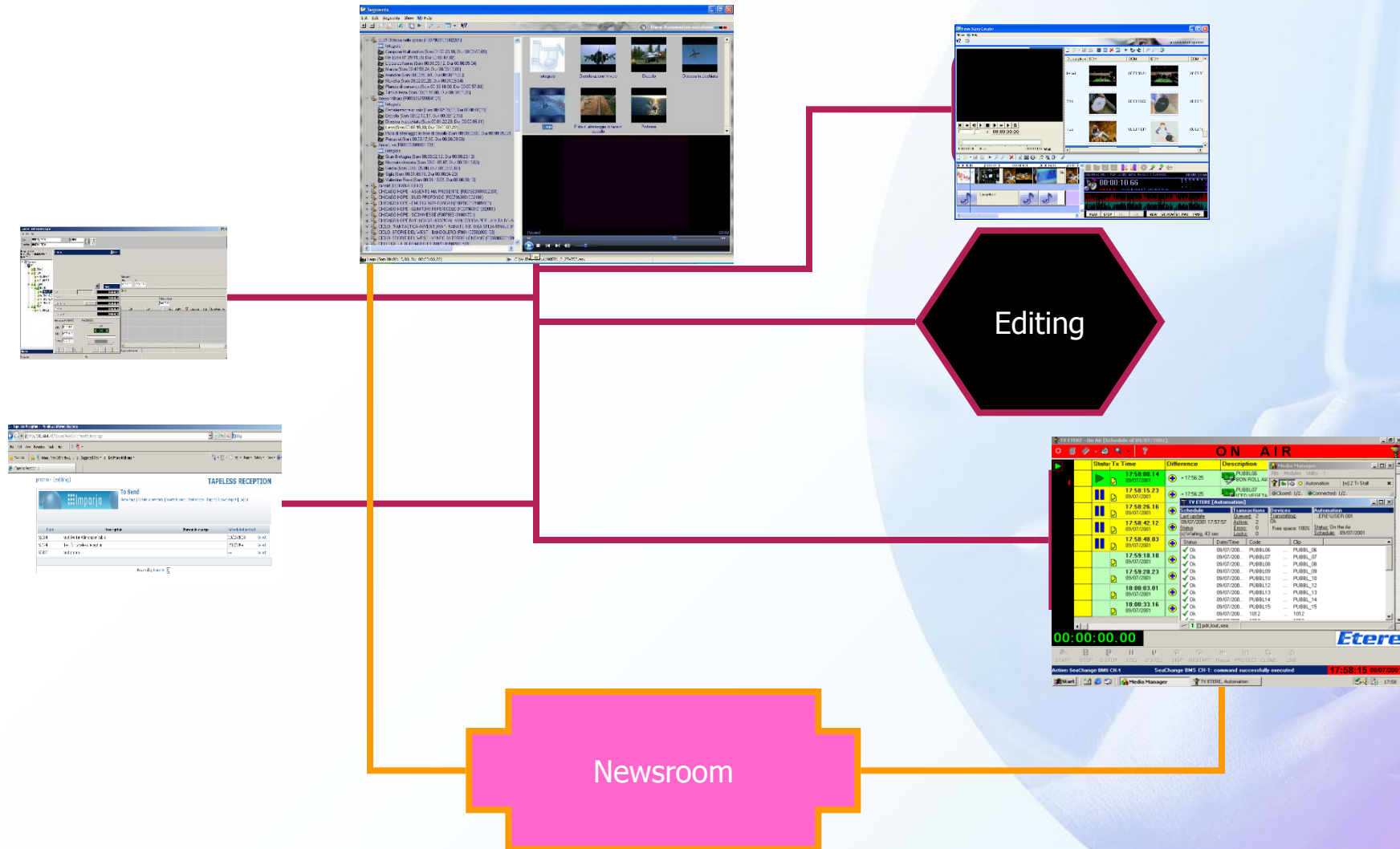
Newsroom Integration

Etere Media Asset Management and Newsroom Integration

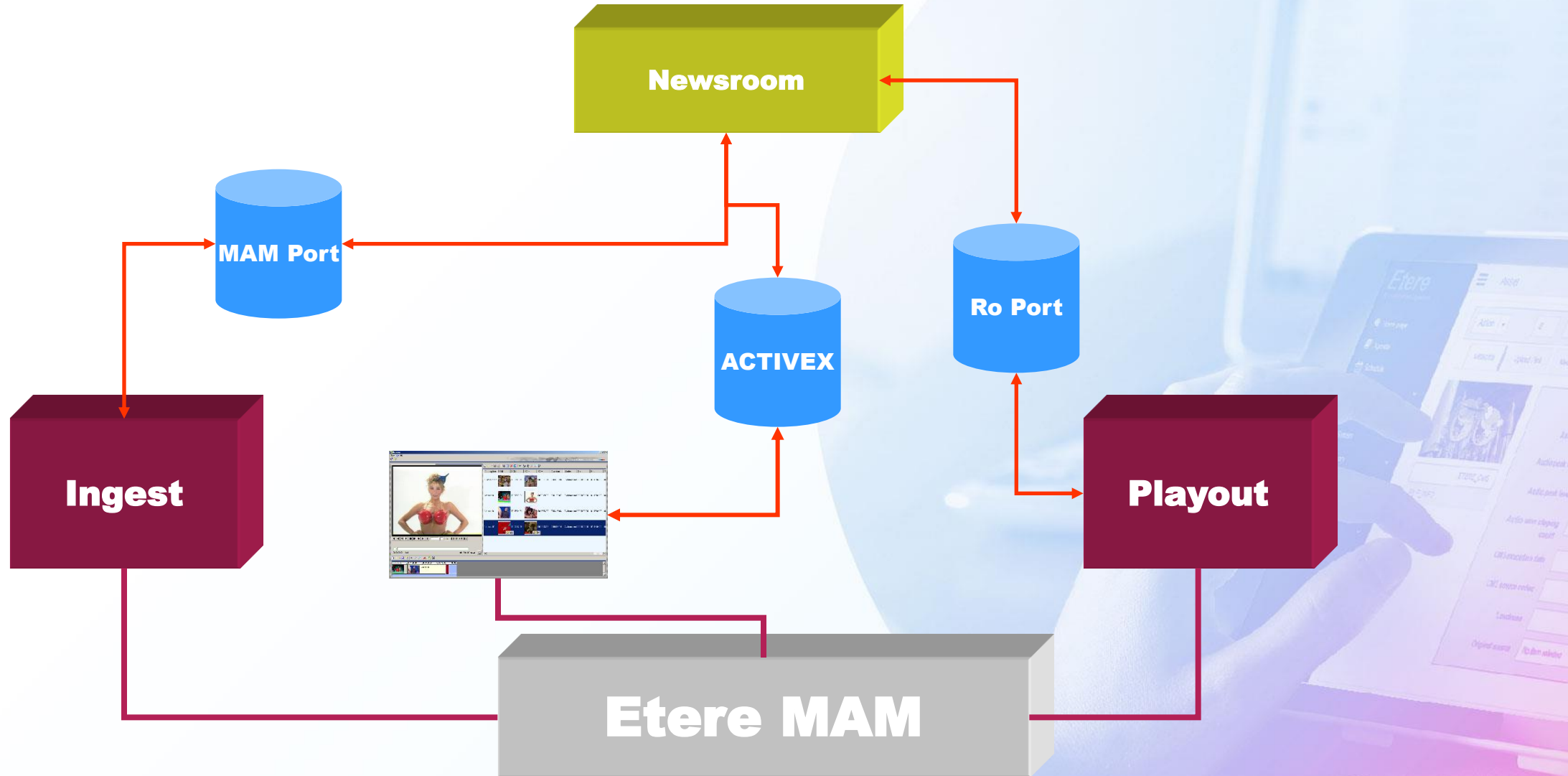
a consistent system



Newsroom Integration

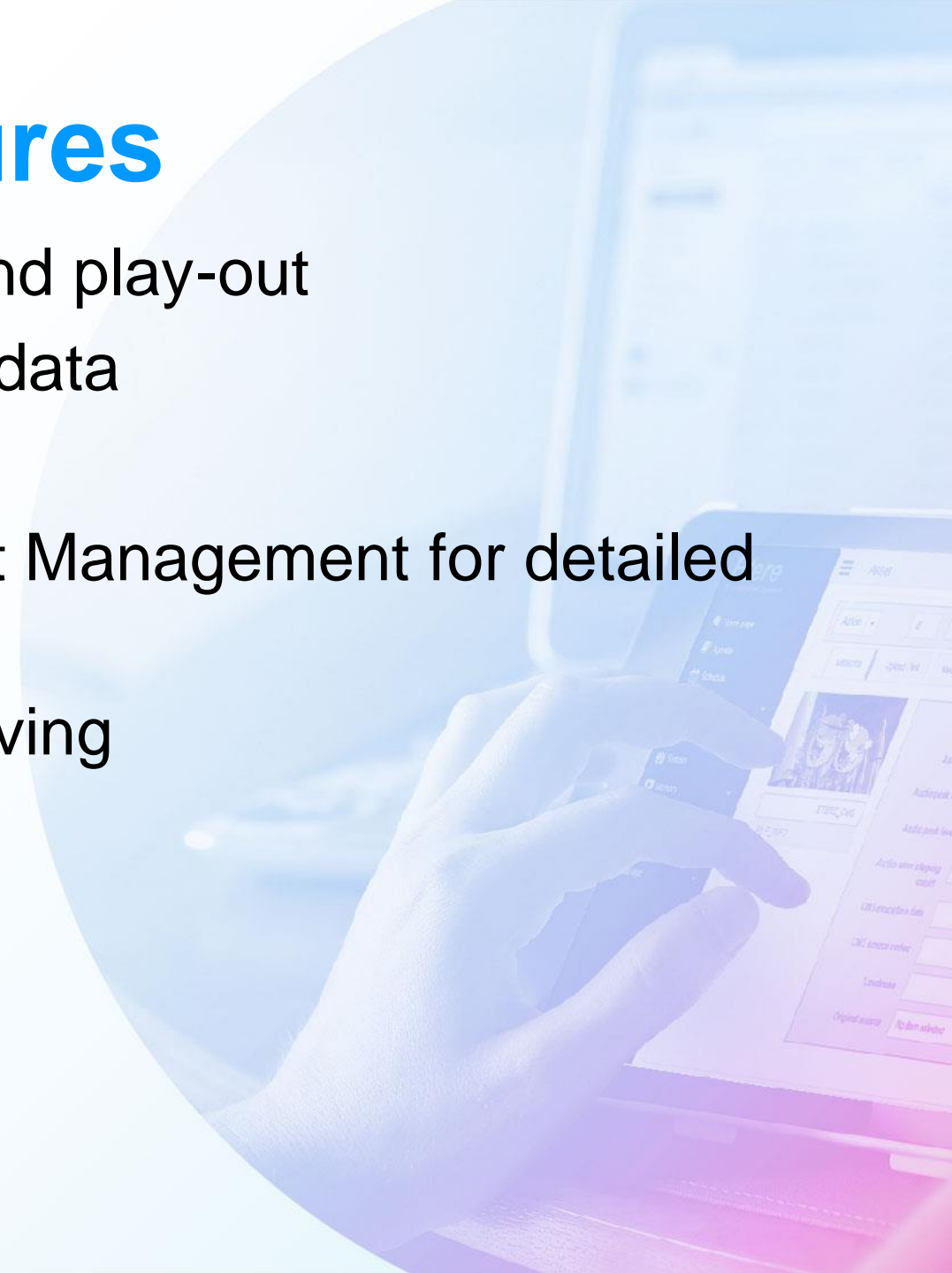


Newsroom Integration



Key Features

- Use proven technology for ingest and play-out
- Use a Sql2008 to store all the metadata
- Integrated browsing system
- Integrated with ETERE Media asset Management for detailed indexing
- Integrated with Etere HSM for archiving
- Fully customizable

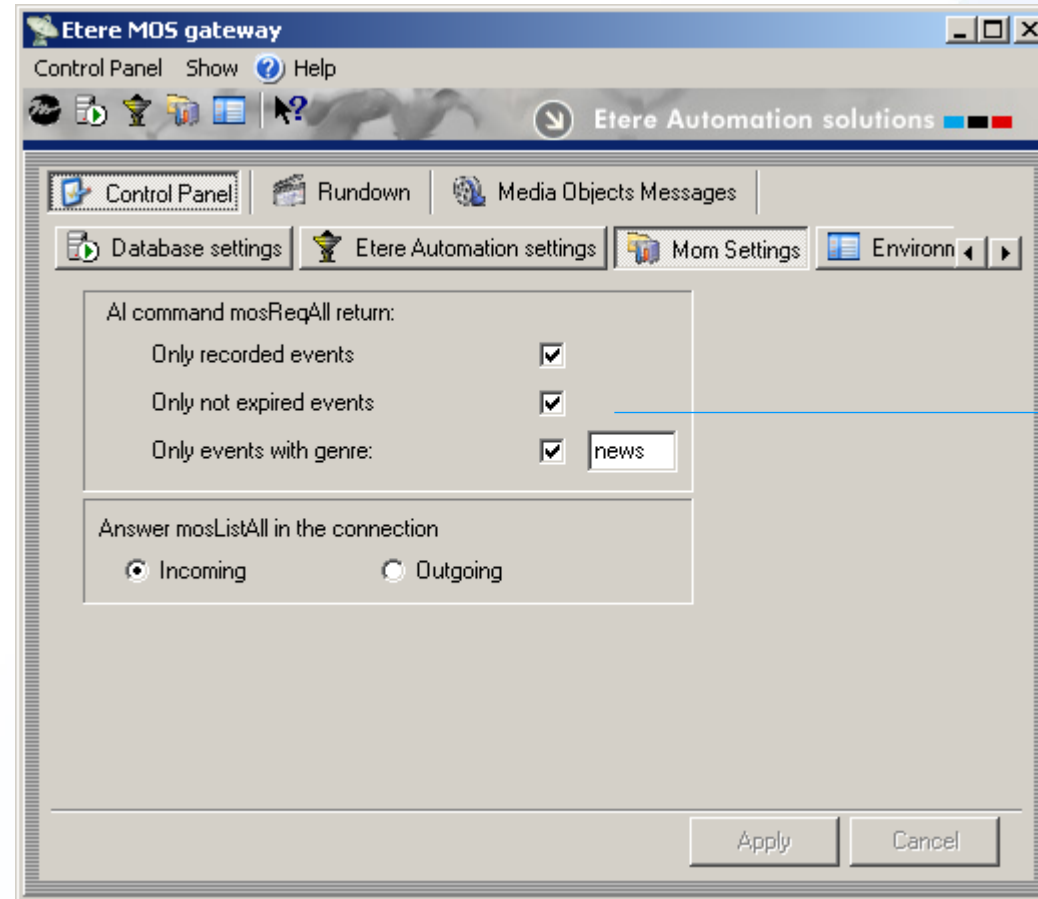


Advantages

- Etere Mos gateway is an extension of Etere
- It uses all the features of ETERE, for ingest and play-out
- It can give to the customer a complete solution with a competitive price



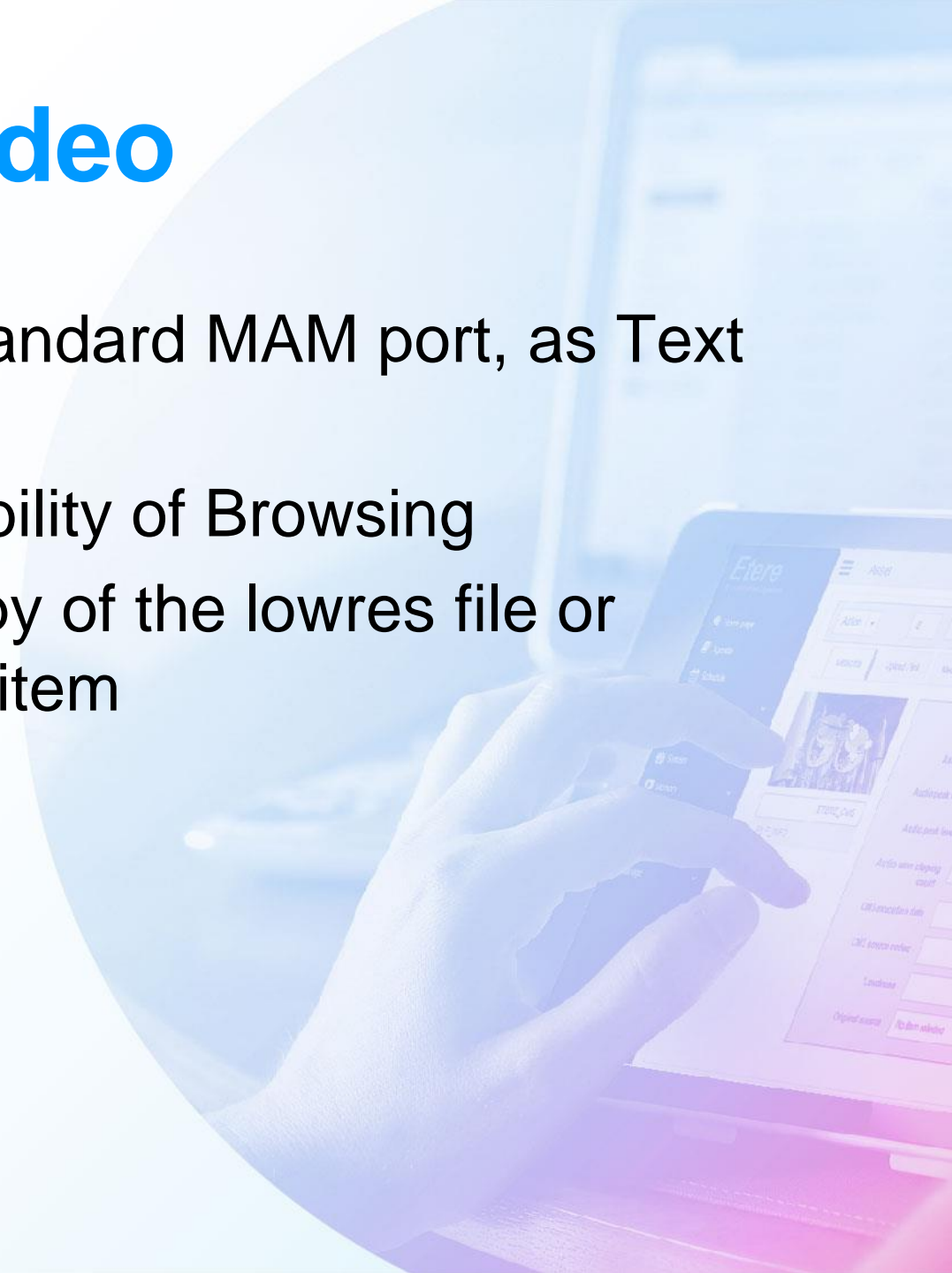
Gateway Setup



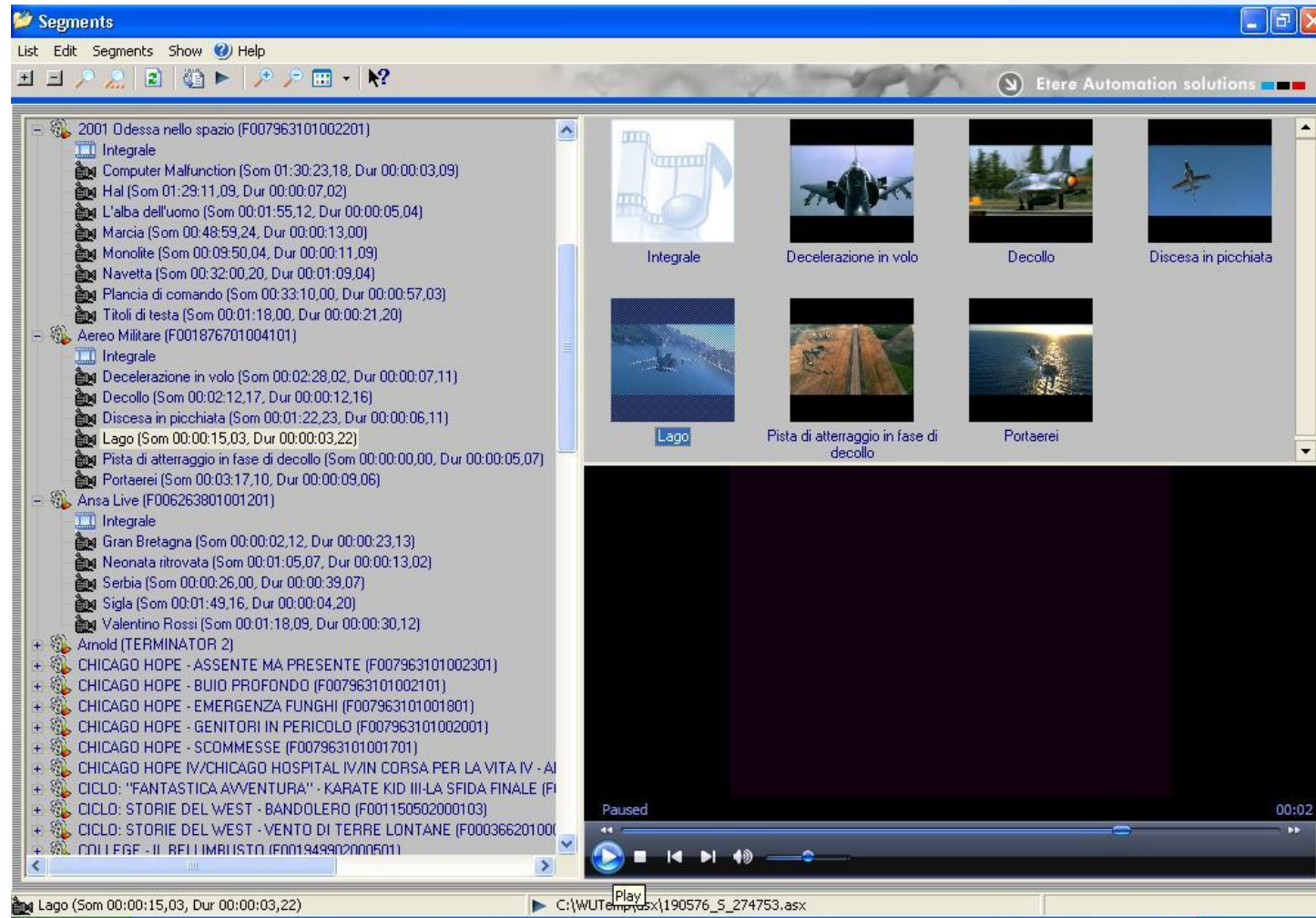
Events to be published

Access Video

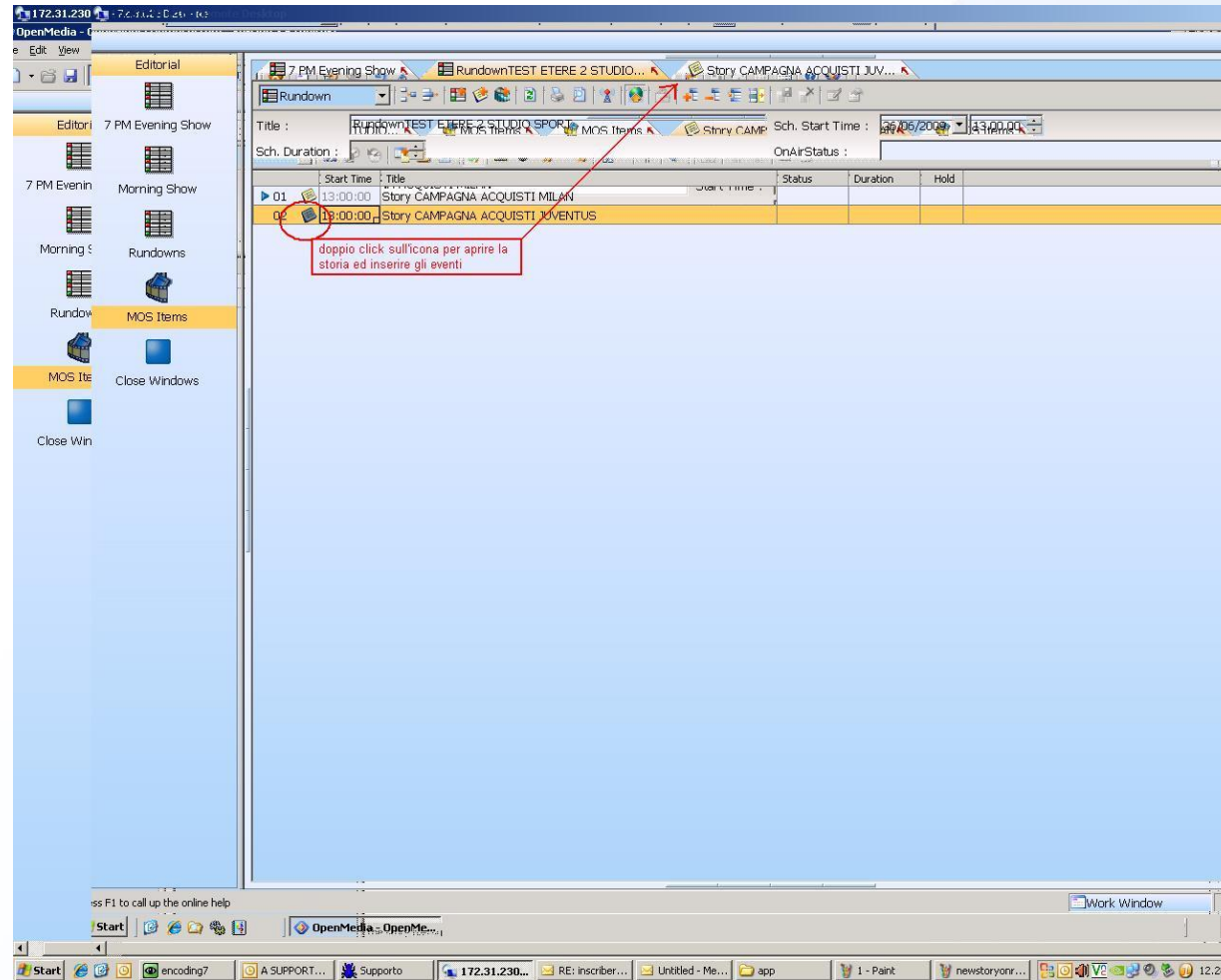
- The video can be accessed via the standard MAM port, as Text only
- Also the integrated Activex give the ability of Browsing
- If your newsroom system allows a copy of the lowres file or playlist is integrated in the newsroom item



Active X



Newsroom Rundown



Rundown

- The rundown can be published from the newsroom system
- Etere offers a complete feedback to the newsroom system
- Cued, ready and missing event are correctly displayed

Rundown Status

OpenMedia - OpenMedia Demosystem - Version 3.6 (editor)

File Edit View Tools Window Help

Rundown 1

Editorial

7 PM Evening Show

Morning Show

Rundowns [Ctrl+Shift+O]

MOS Items

Close Windows

Rundown 1 Rundowns Rundowns Rundowns 7 Rundowns Notizione

Rundown

Title : Rundown 1 Sch. Start Time : 01/04/2010 16.30.00

Sch. Duration : 15:00:00 OnAirStatus : OFF AIR

	Start Time	Title	Status	Duration	Hold
▼ 01	16:30:00	7			
01		test ANNOVA 1	PLAY		
02		Annova news 3	NEW		
▶ 02	16:30:00	Notizione			

Automation

etereonairclone
Etere MOS gateway
Pannello di Controllo Visualizza Help

Channel 1, Automazione
Automazione Visualizza Help
a consistent system

Channel 1 - In Onda [Palinsesto del 01/04/2010]

ON AIR

Stato	Orario Tx	Info Tx	Differenza	Descrizione	Supporto
				[story] Notizione	
	16.58.00.00 01/04/2010	Caricato su MTX CH-3	+966472.58.00	156@etere.annova.mos test Annova 2	OMTX FF_TEST2
				[Separator]	
				[R] pomeriggio	
				[story] new clip	
	16.58.51.06 01/04/2010	...	+966472.58.51	155@etere.annova.mos test ANNOVA 4	OMTX FF_TEST10
				[Separator]	

-00.02.26,20

START STOP D STOP PAUSE D STILL SKIP RESTART RECUE PROTECT CLONE LIVE SK2LIVE

Active: MTX CH-3 MTX CH-3: command successfully executed 16.57.2

Slugs ID objID mosID Channel Carica

Rundown 1	OM_1.4162				
7	OM_1.4163,1.4162.1				
test ANNOVA 1	OM_-4.4422,1.4163.1	154	etere.annova.mos		
Annova news 3	OM_-4.4420,1.4163.2	157	etere.annova.mos		
Notizione	OM_1.4164,1.4162.2				
test Annova 2	OM_-4.4421,1.4164.1				
pomeriggio	OM_1.4165				
new clip	OM_1.4166,1.4165.1				
test ANNOVA 4	OM_-4.4418,1.4166.1				

Voice Over

News Story Creator

Show Help

a consistent system

Description SOM SOM EOM EOM

Italia1		00:00:00,21		00:00:03
Toc		00:00:10,02		00:00:10
Toc		00:00:14,11		00:00:16

00:00:00,00 38.xtl 00:00:10,16 Wait

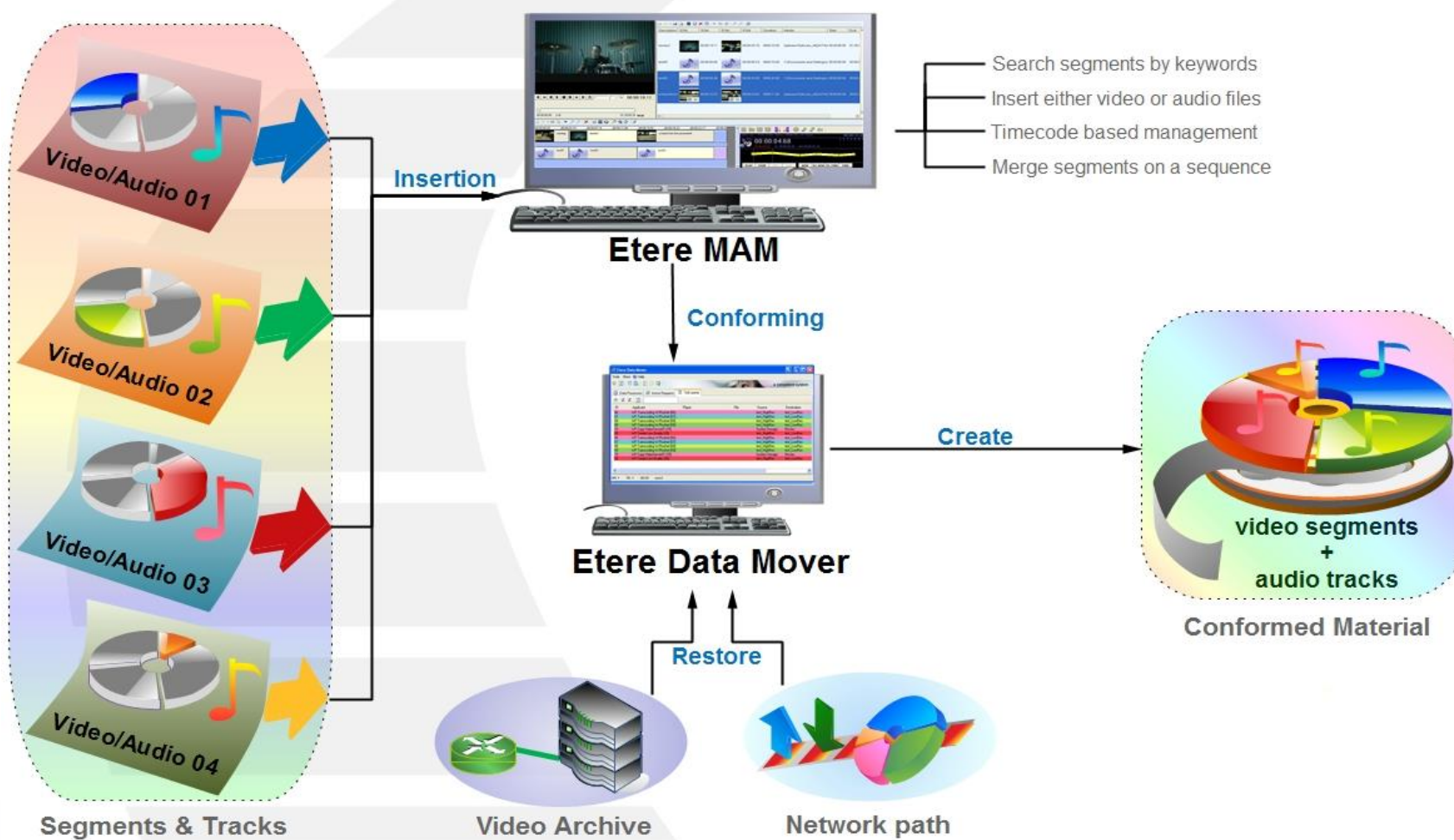
00:00:00,00 00:00:04,18 00:00:09,11 00:00:14,03 00:00:18

LoopyMusic.wav - PCM, 16 bits mono, 44100 kHz, 86 Kb/sec 00:00:10.66

00:00:00,00 In 00:00:00,00 *- Out 00:00:10.66

PLAY STOP REC CUE REW ST. REW ST. FWD FWD

Video Conforming

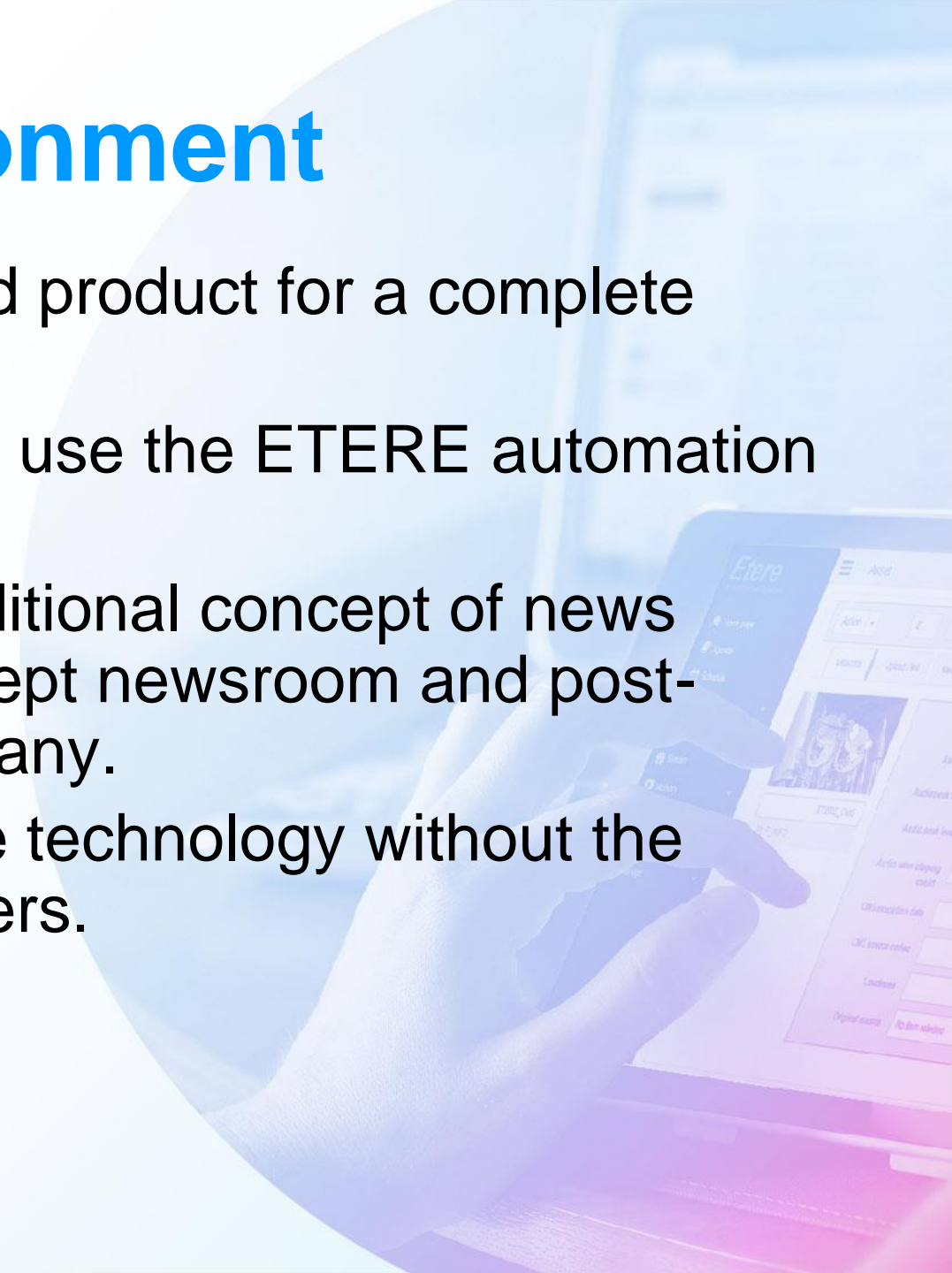


Different workflows

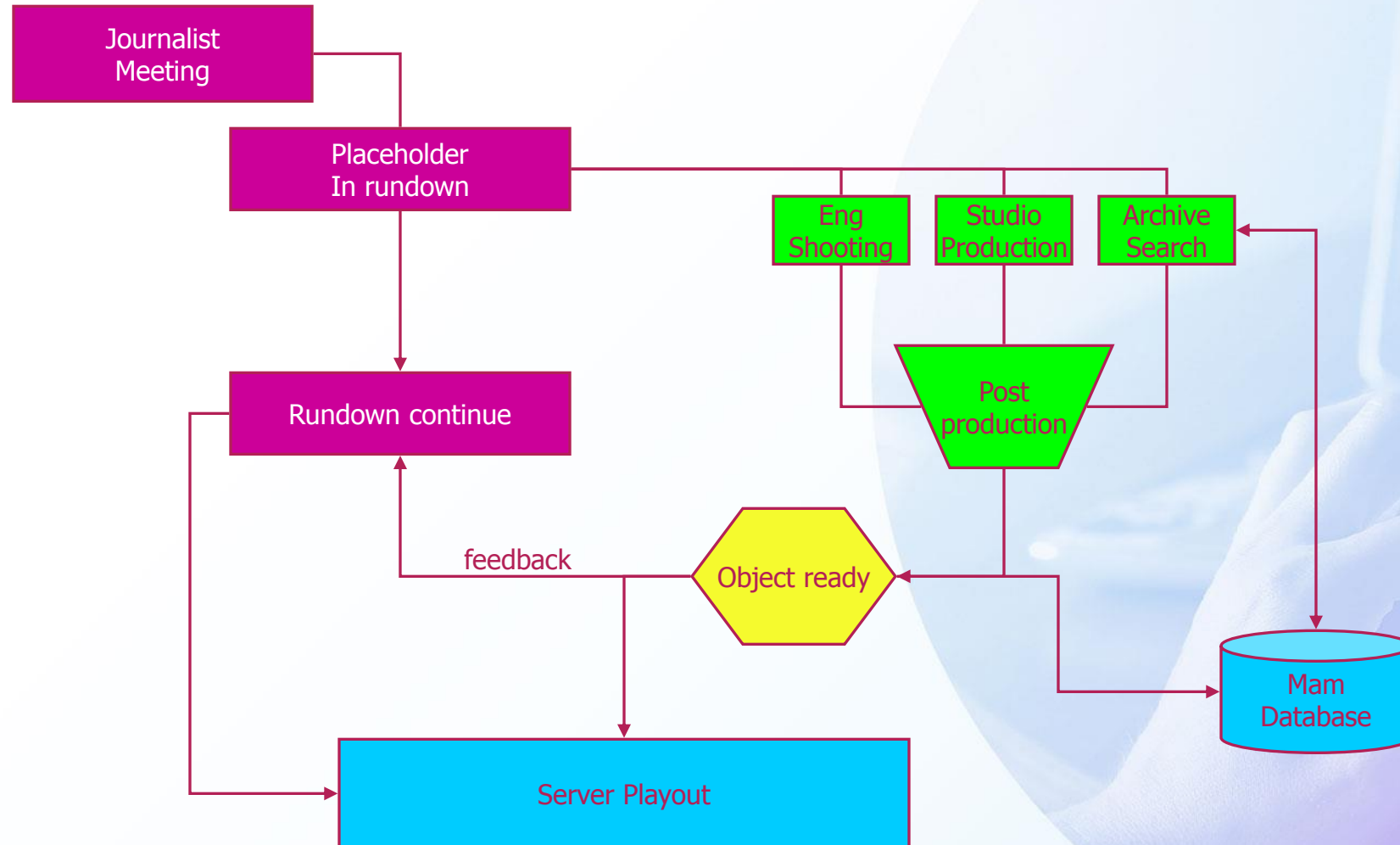


Single Environment

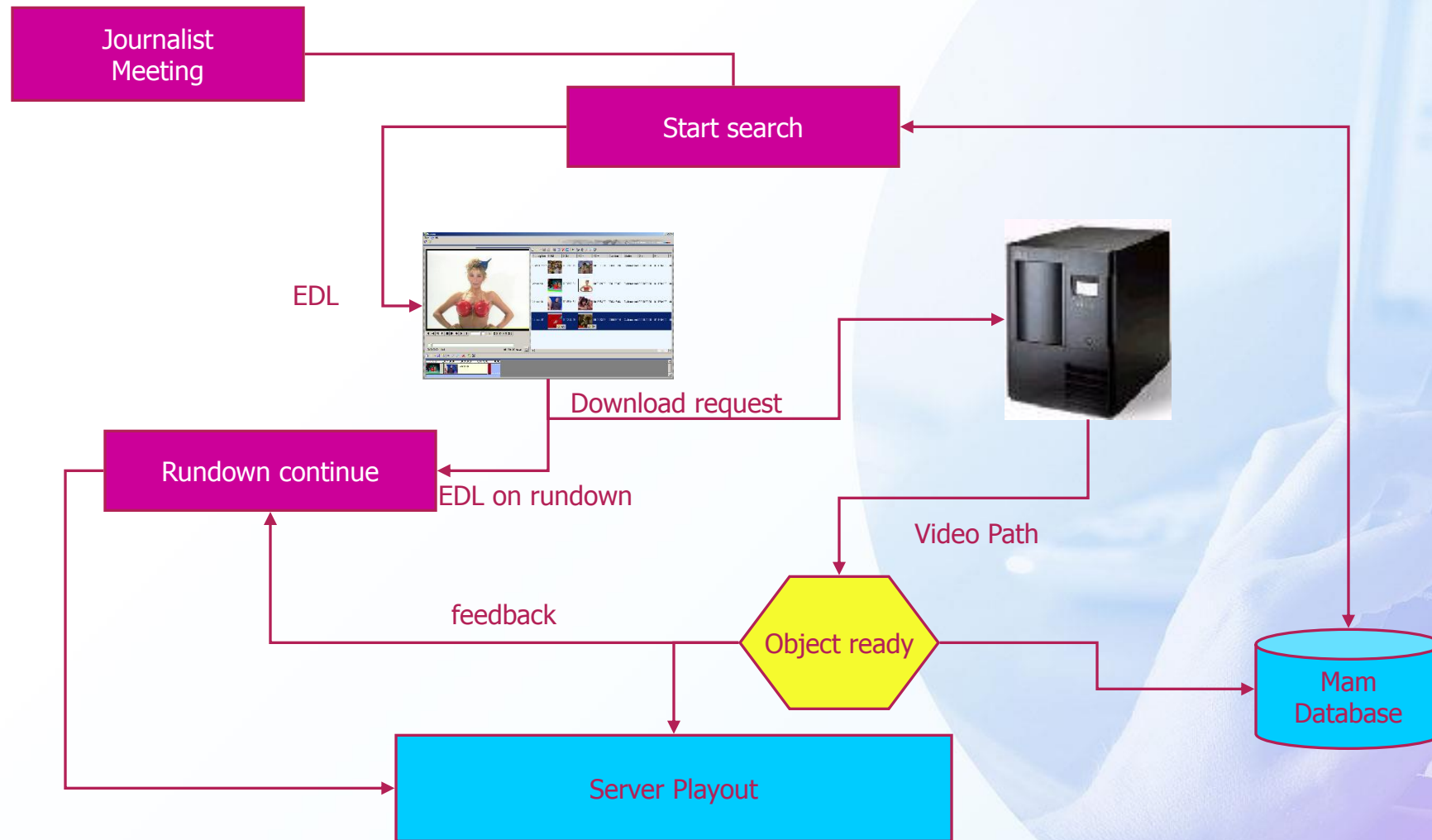
- Etere automation offers an integrated product for a complete news environment workflow.
- All the ETERE products for the news use the ETERE automation core.
- Etere News solution extends the traditional concept of news environment. All News solutions except newsroom and post-production come from a single company.
- This approach allows a cost effective technology without the trouble of integrating different suppliers.



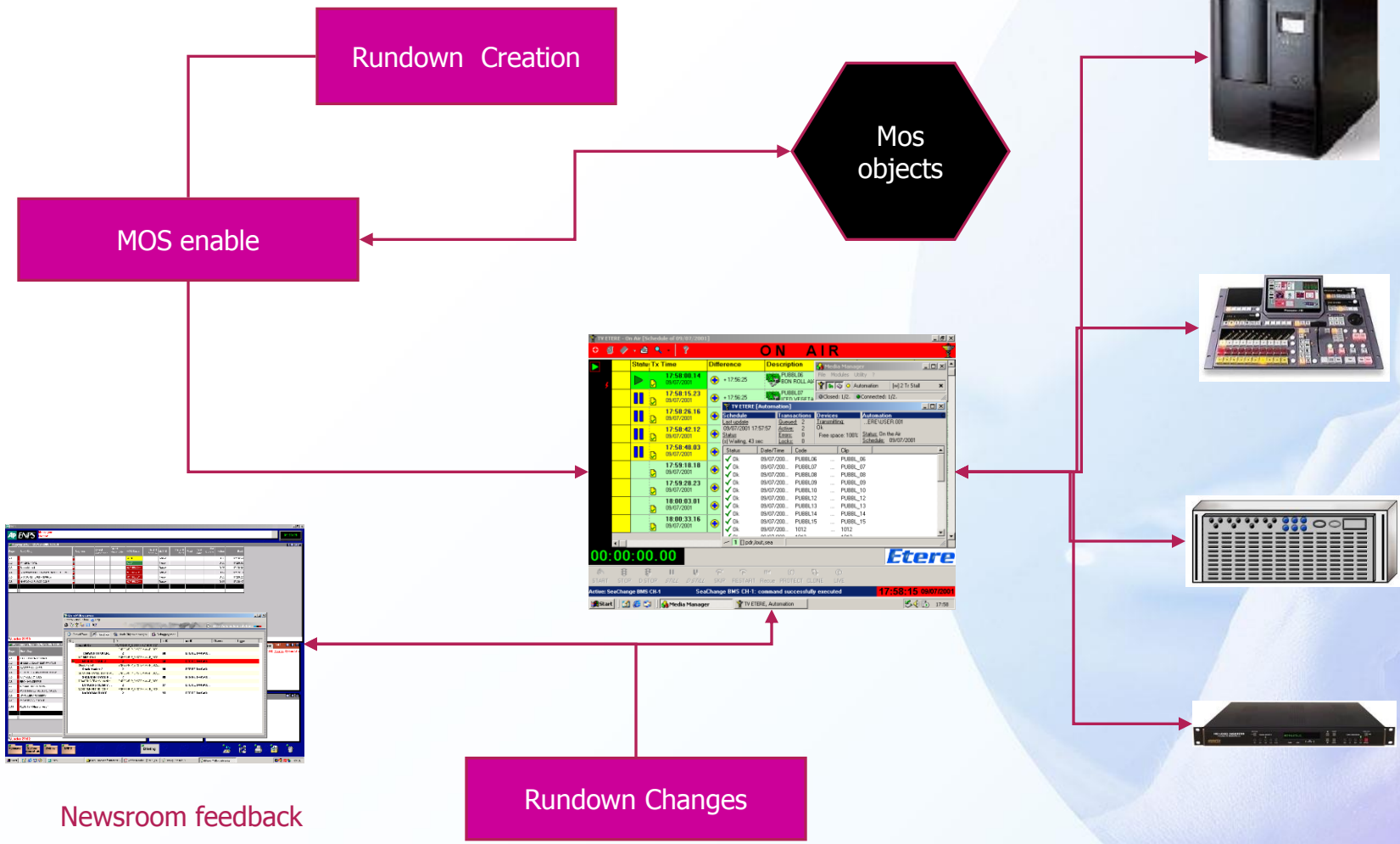
Object Generate by Post-Prod



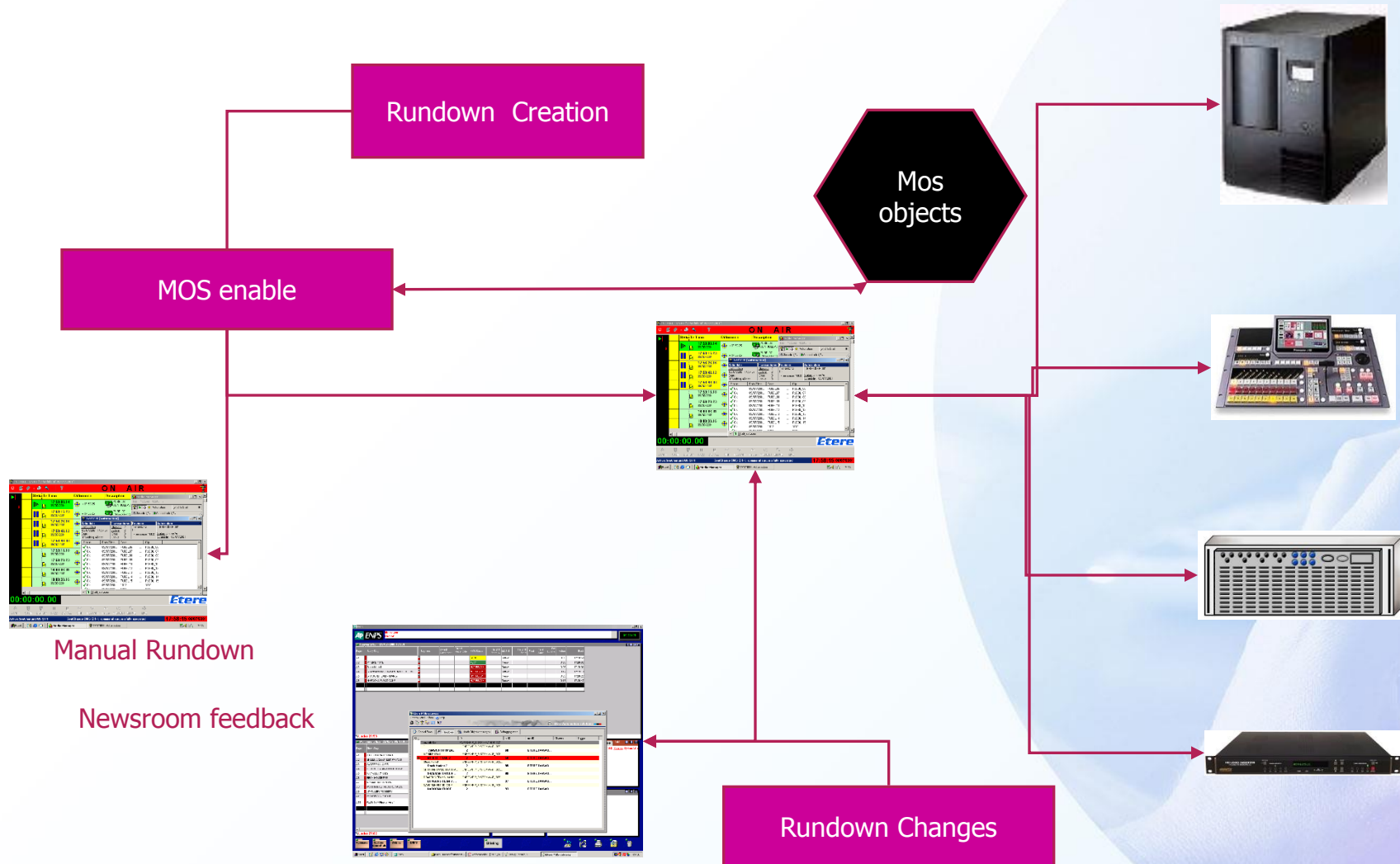
Object Generated by Journalist



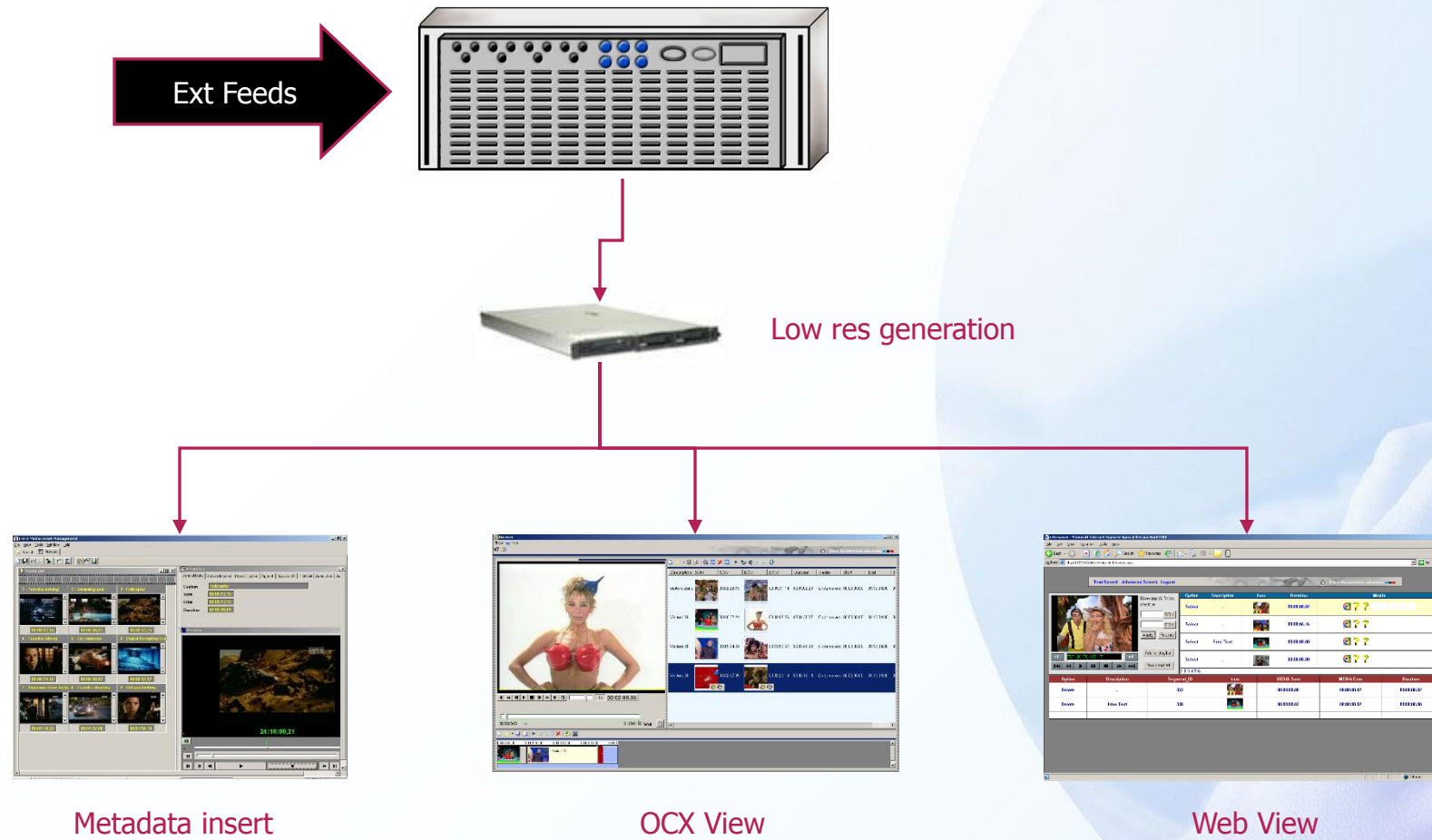
Rundown



Rundown Redundancy



Ingest

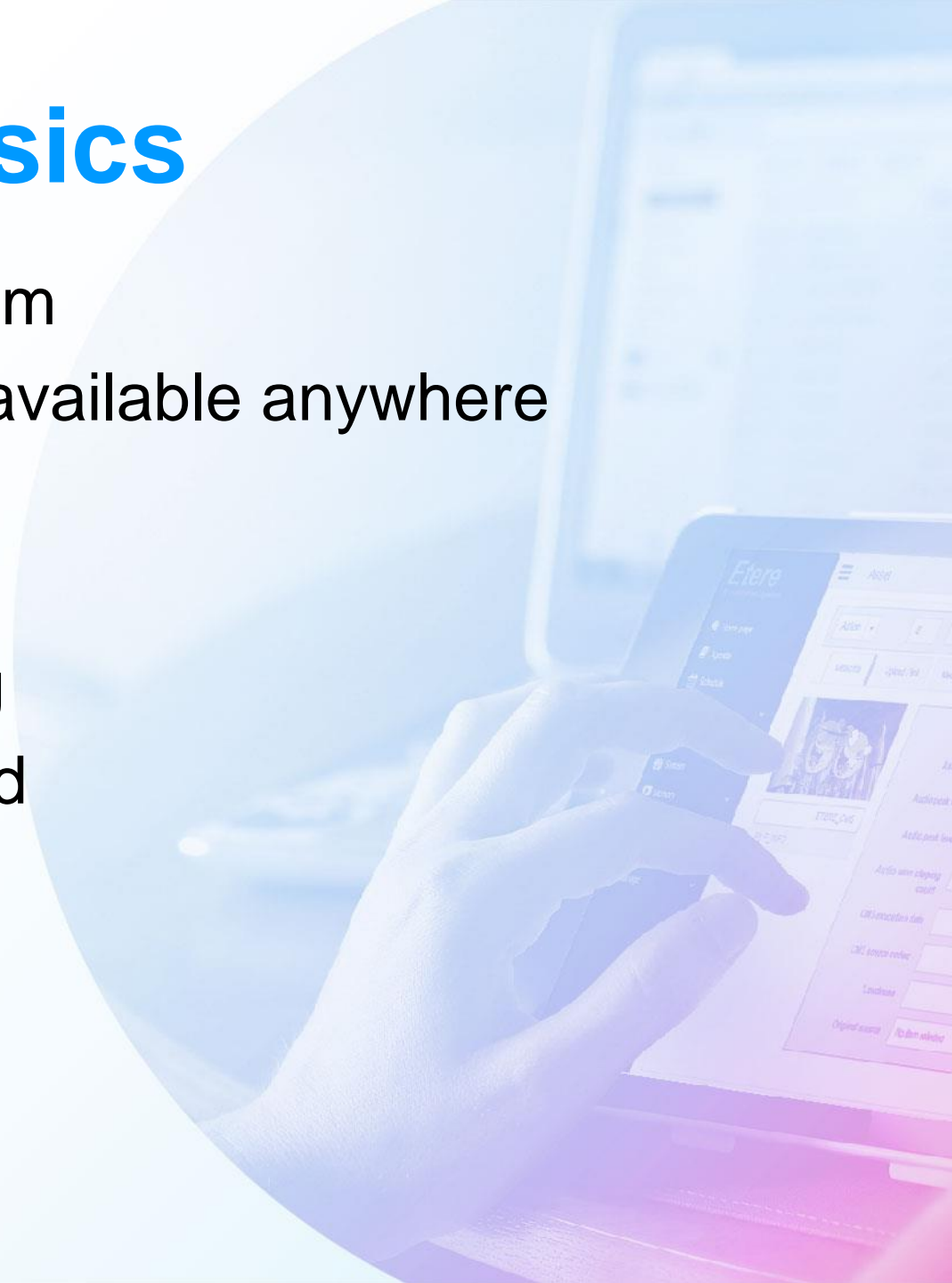


Editing Integration

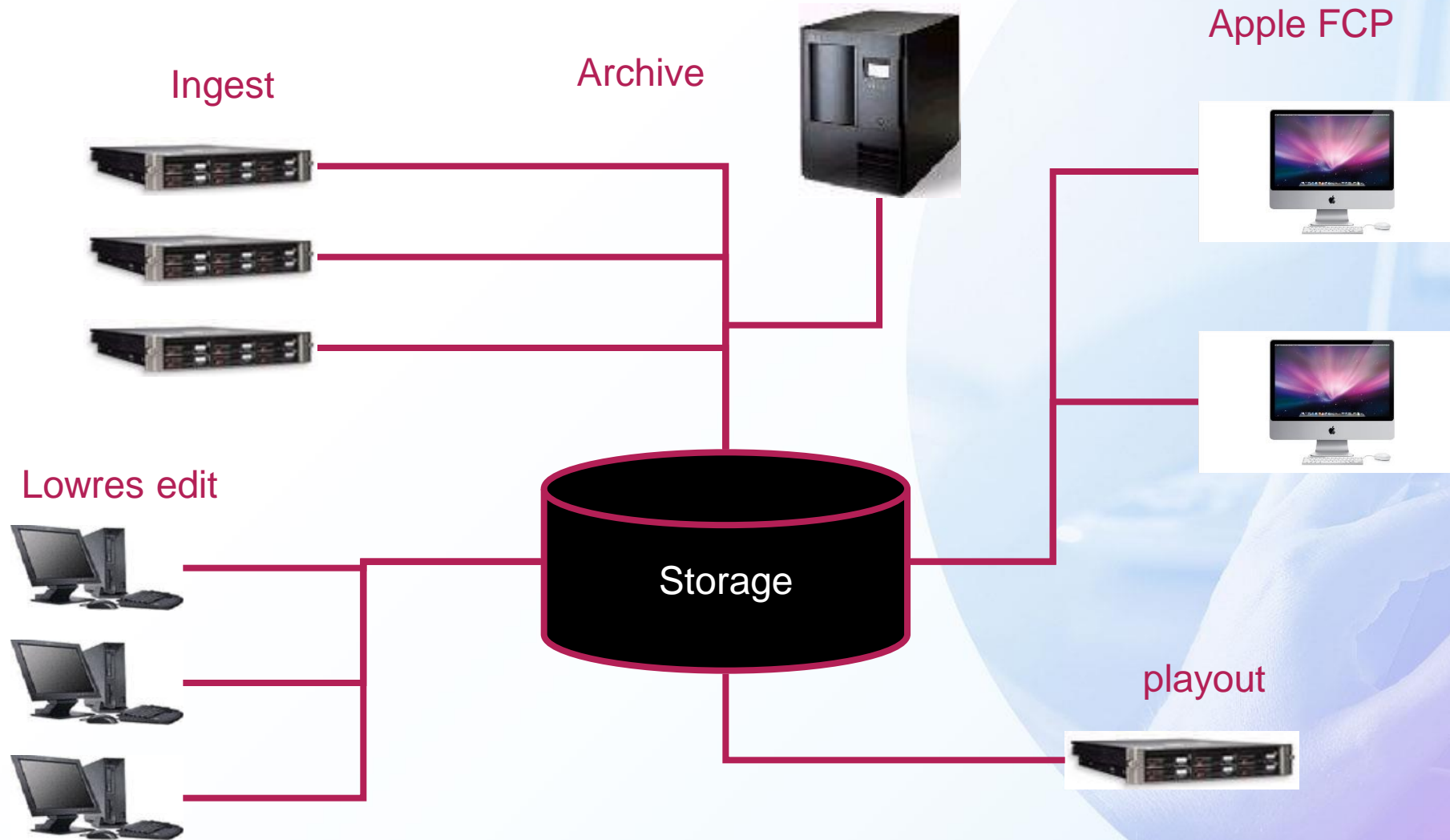


Design Basics

- There are 2 ways to design the system
- Shared storage where everything is available anywhere
 - Faster
 - More expensive
 - Less control on what is happening
- Central storage with upload download
 - Require upload download
 - More Safe
 - Less expensive



Shared Storage Solution



Central Storage Solution

