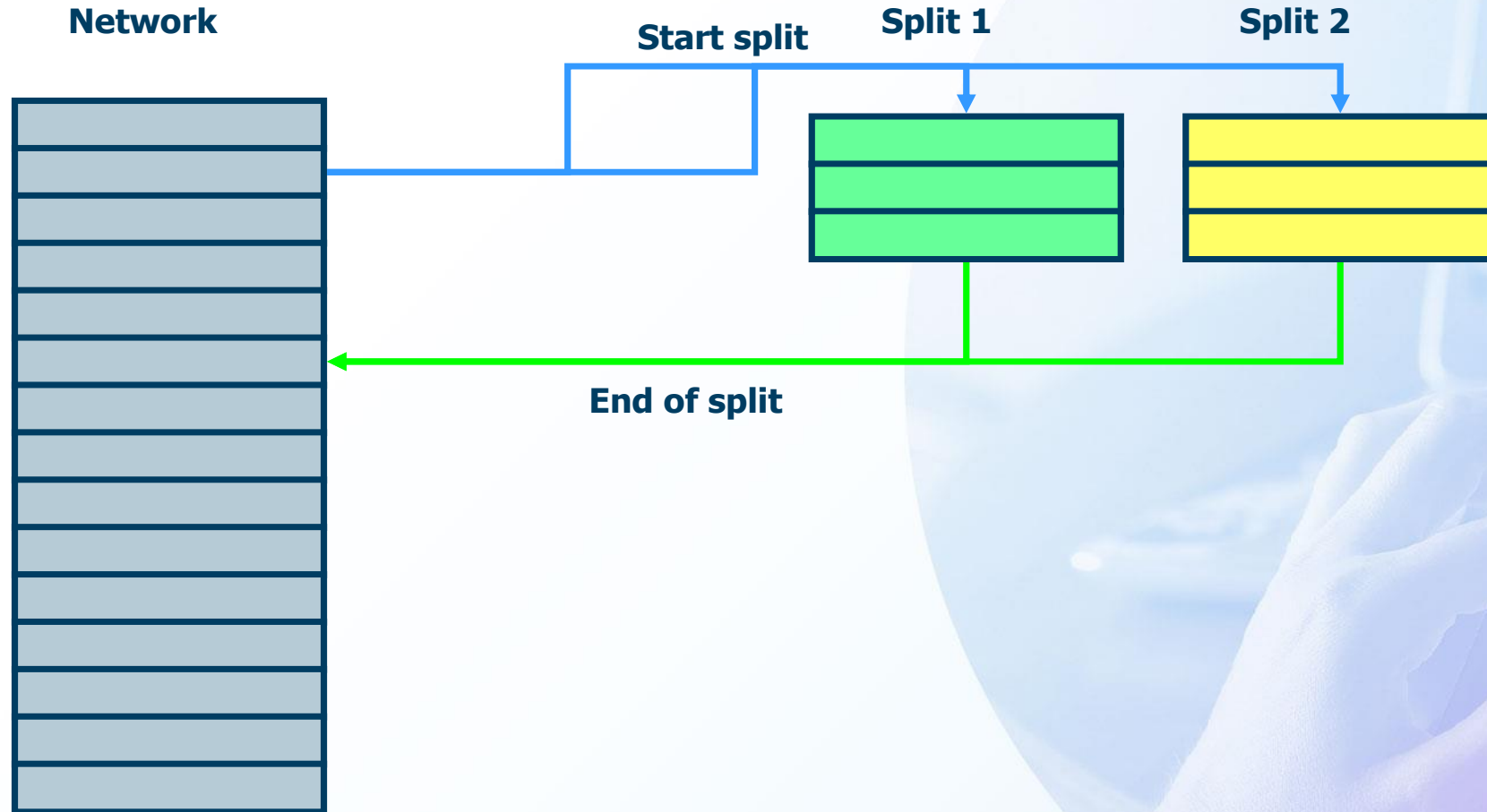


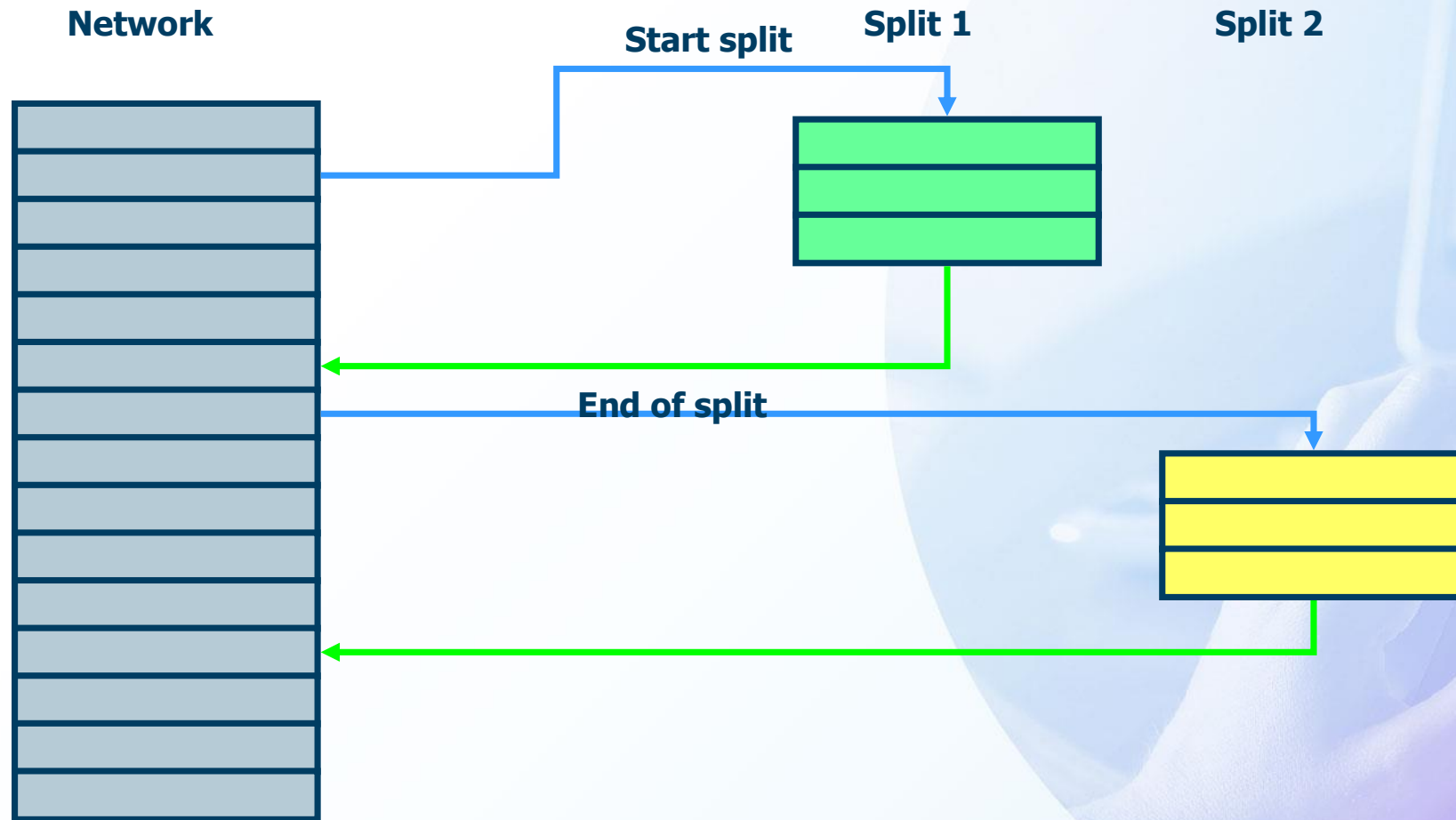
Split Scenarios



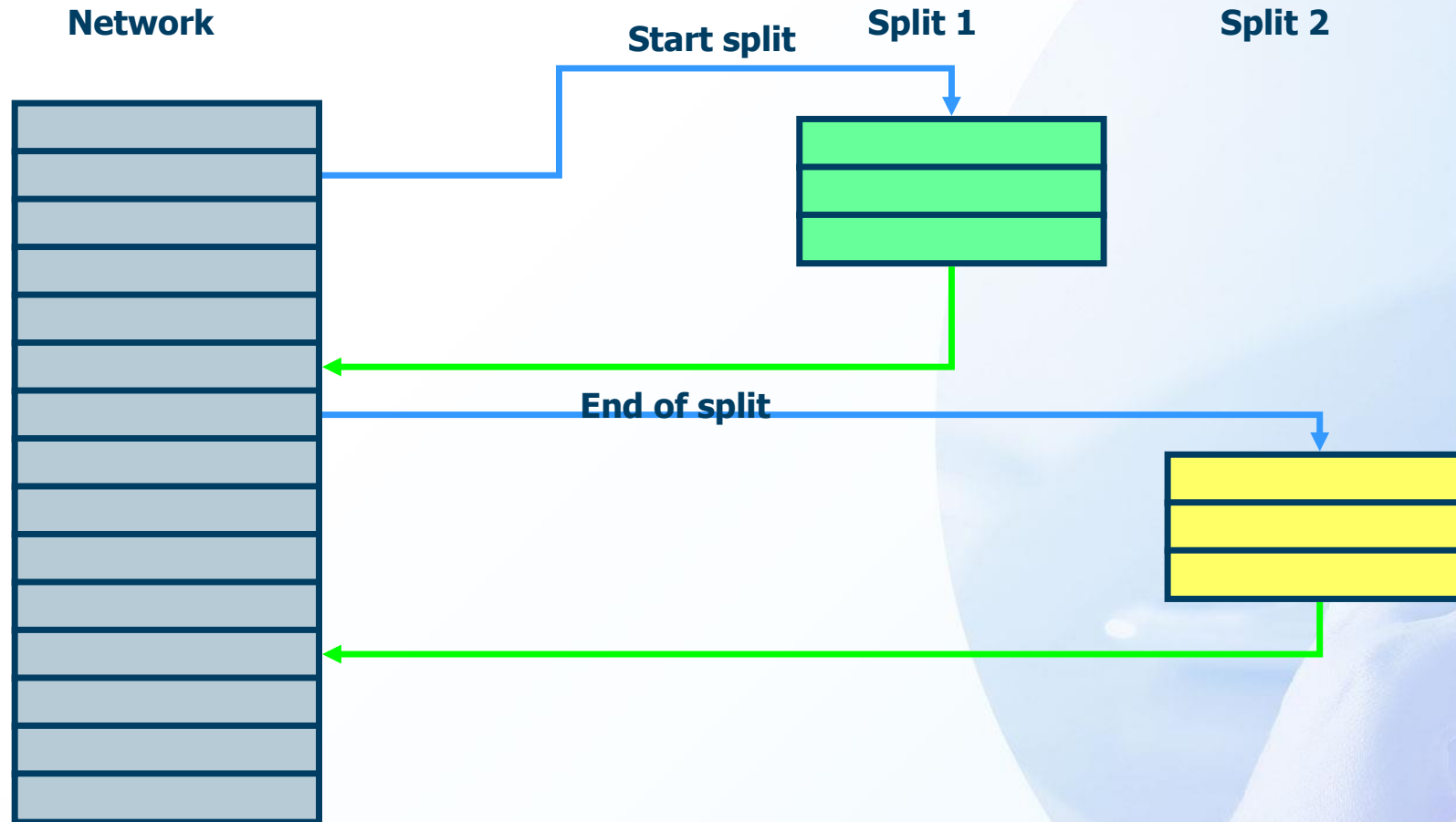
Basic Split System



Asymmetric Split System



Complex Split System

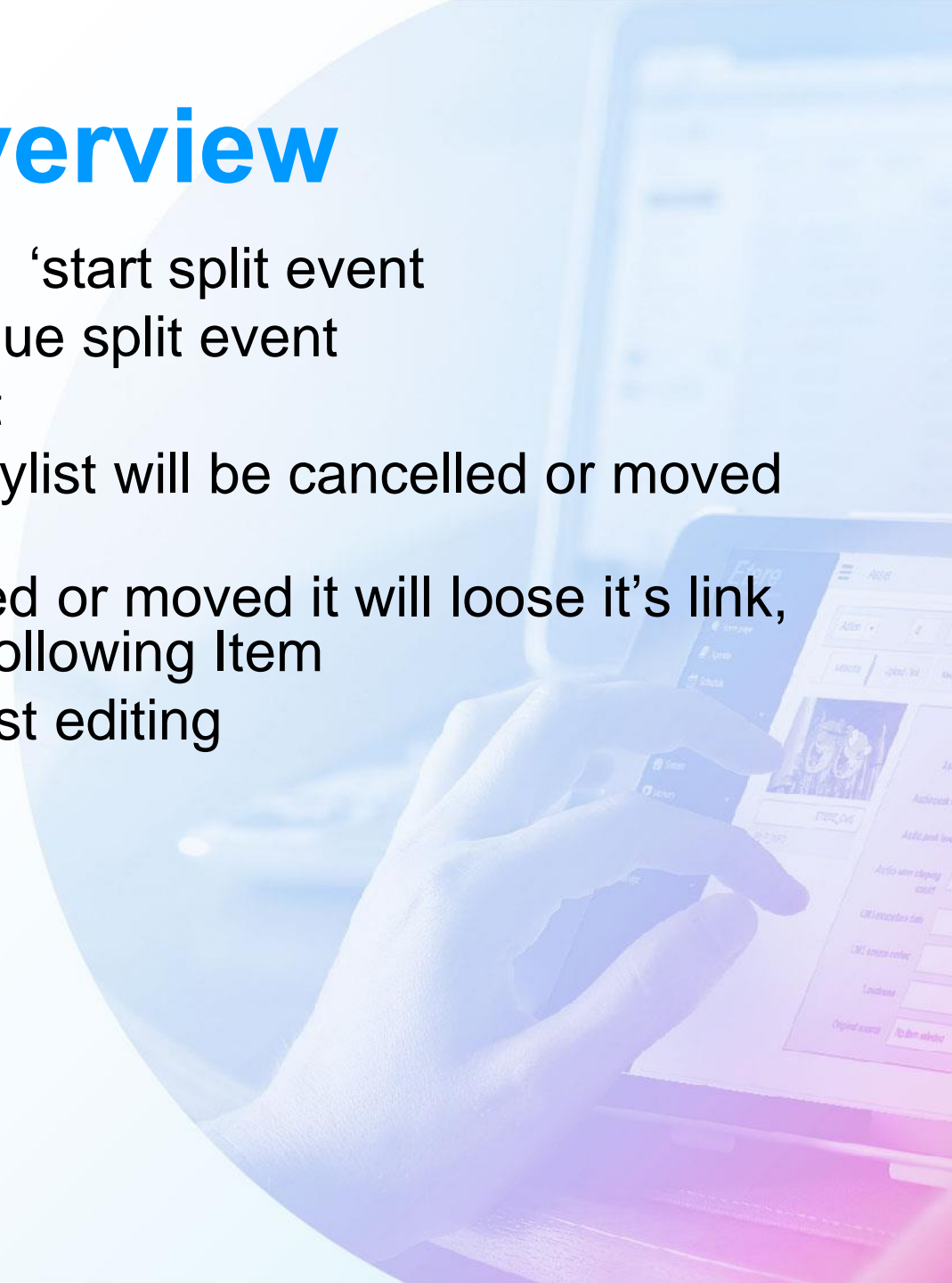


Easy Configuration

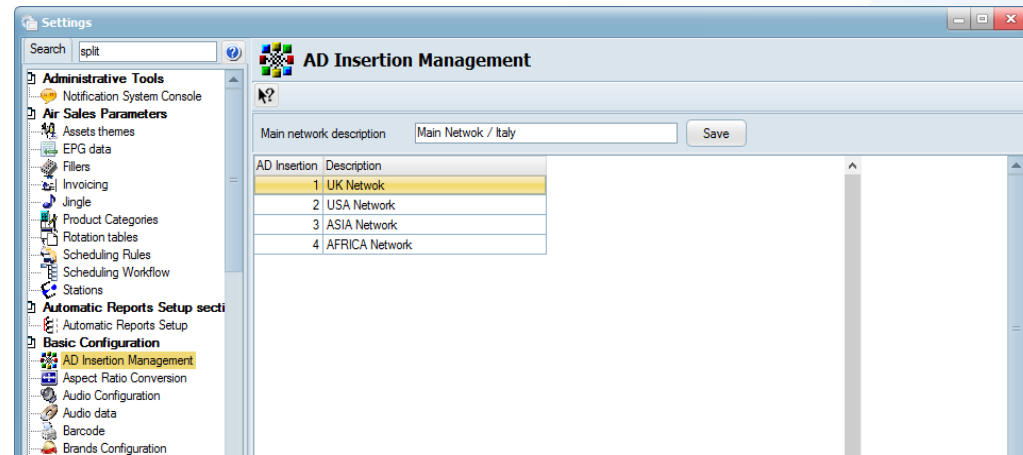


“Splitting” Overview

- Every 1° event in any block has a link to the ‘start split event
- Every start split event of a playlist has a unique split event
- Every end of split has a link to the split event
- If an event with split event of the network playlist will be cancelled or moved the split event will go to the preceding event
- If an event of the split playlist will be cancelled or moved it will loose it’s link, and the link will go to the next preceding or following Item
- Those 2 features will allow a simplified playlist editing

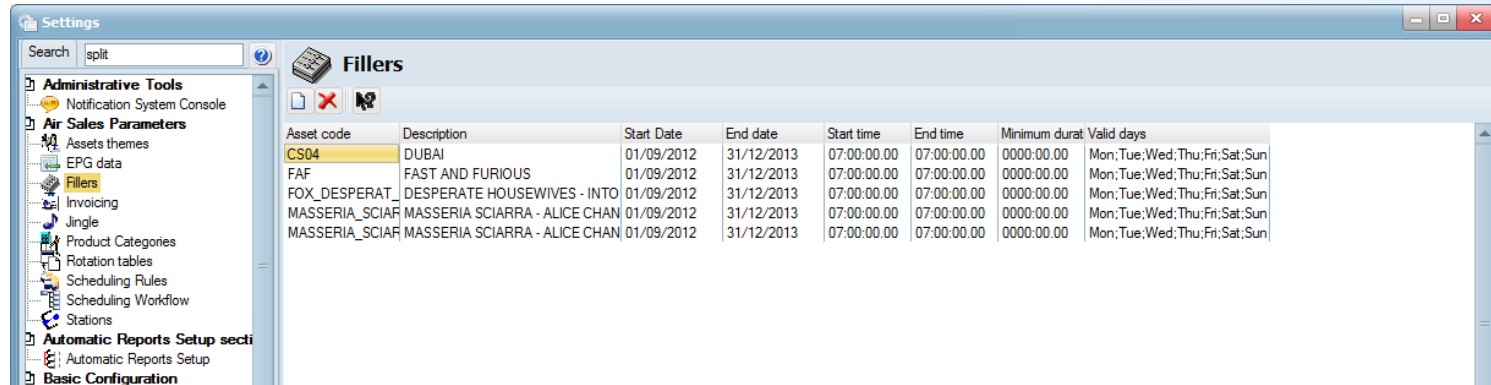


Multiple Regions



- Etere allows broadcasters to manage any number of regions
- Each region can be easily configured in Etere interface

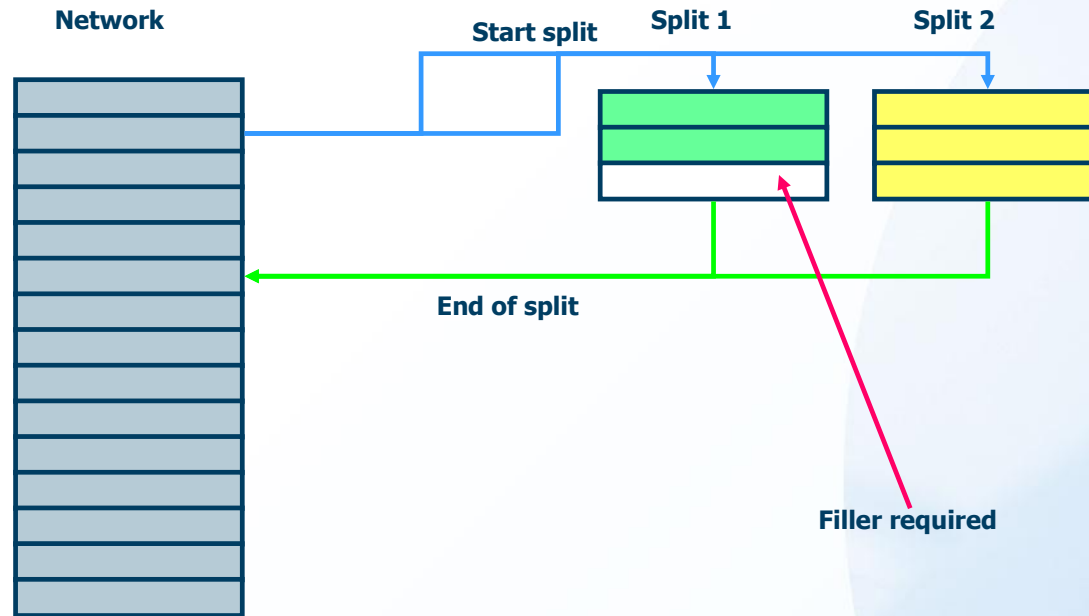
Fillers Configuration



Asset code	Description	Start Date	End date	Start time	End time	Minimum durat	Valid days
CS04	DUBAI	01/09/2012	31/12/2013	07:00:00.00	07:00:00.00	0000:00.00	Mon;Tue;Wed;Thu;Fri;Sat;Sun
FAF	FAST AND FURIOUS	01/09/2012	31/12/2013	07:00:00.00	07:00:00.00	0000:00.00	Mon;Tue;Wed;Thu;Fri;Sat;Sun
FOX_DESPERAT	DESPERATE HOUSEWIVES - INTO	01/09/2012	31/12/2013	07:00:00.00	07:00:00.00	0000:00.00	Mon;Tue;Wed;Thu;Fri;Sat;Sun
MASSERIA_SCIAR	MASSERIA SCIARRA - ALICE CHAN	01/09/2012	31/12/2013	07:00:00.00	07:00:00.00	0000:00.00	Mon;Tue;Wed;Thu;Fri;Sat;Sun
MASSERIA_SCIAR	MASSERIA SCIARRA - ALICE CHAN	01/09/2012	31/12/2013	07:00:00.00	07:00:00.00	0000:00.00	Mon;Tue;Wed;Thu;Fri;Sat;Sun

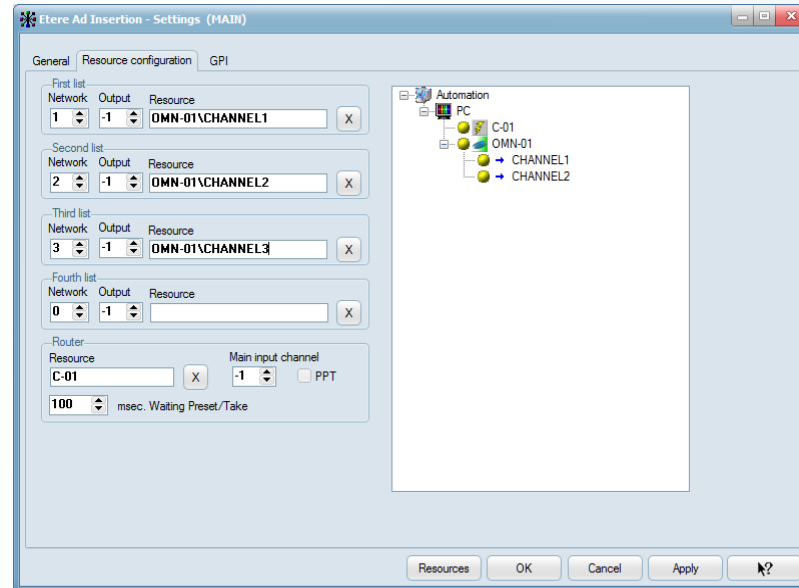
- Configure as many fillers as required, they will be used to define the splitting duration between networks equal
- Fillers count with the following properties:
 - Description: A brief description about the filler
 - Start/End Date: The initial and last validity dates
 - Start/End Time: The time slot on which the filler will be allowed
 - Minimum duration: The minimum time period
 - Valid Days: The weekdays on which the filler will be available

Fillers



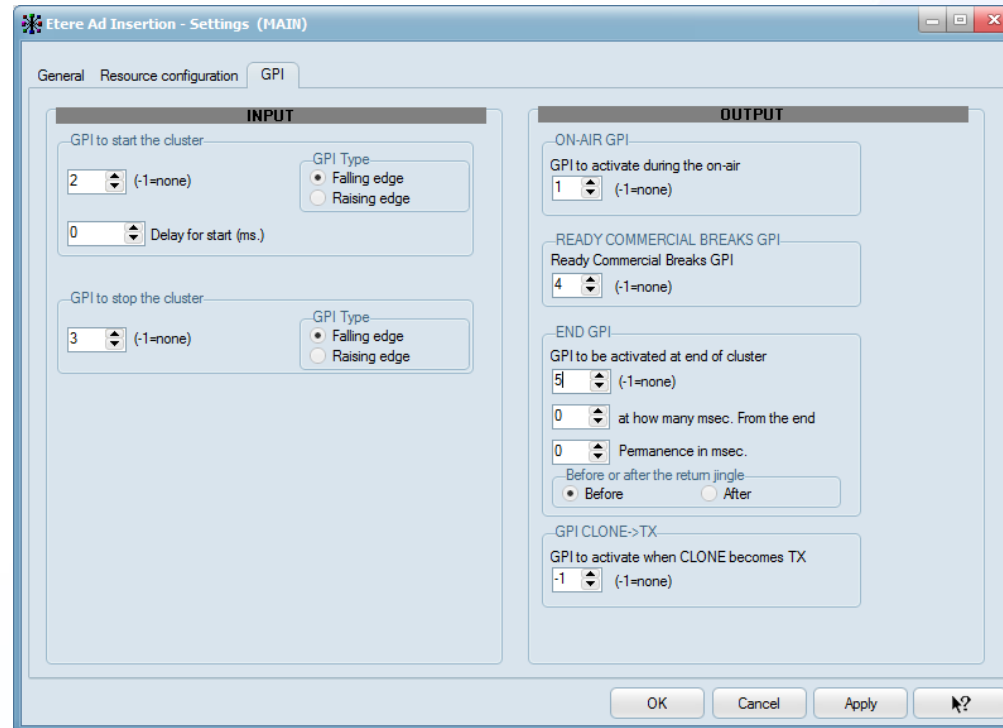
- Each split automation computes how many fillers are necessary to reach the network duration
- If the split duration is more, the last split(s) event will be shortened to reach the correct duration
- The fillers must be configured and different parameters chosen

Different Channels by Network



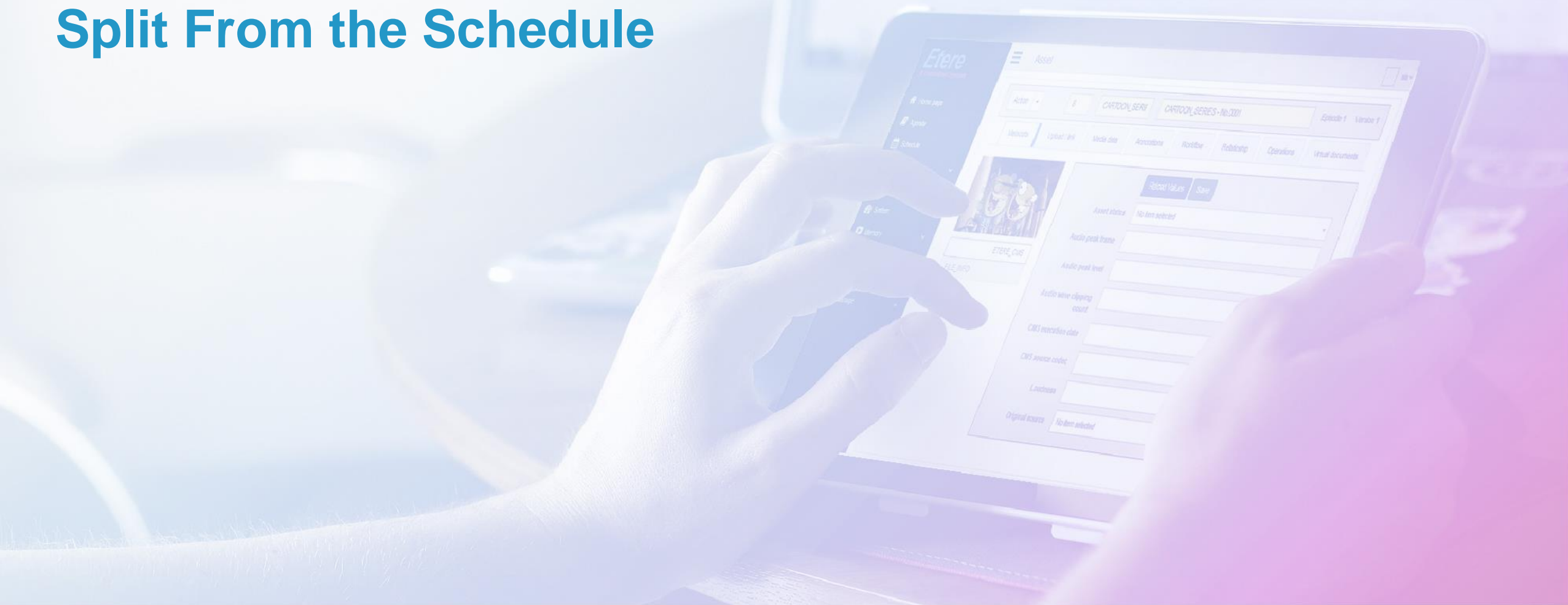
- Assign an independent playout channel to each split network

GPI Control



- Configure an input GPI to trigger the split from an external device
- Send also output GPI's signals to external devices when a cluster is ready, when it goes on-air or when it finishes

Split From the Schedule



Splitting Programs

The screenshot displays the 'Split' software interface, which is used for managing program splits across different networks. The main window shows a schedule of programs with columns for Timecode out, Type, Code, Description, File name, Properties, ID Split, Blocks, and Segments. A context menu is open over the schedule, showing options like New, Delete, Cut, Copy, Paste, Preview, Edit, Asset Form, Secondary Events, Properties, Split, Event type, Fill to next, Fill until the scheduled time of the next, Update duration, Update durations Secondary Events, Explode, and Implode. The right side of the interface shows a list of programs for different networks: Northern Italy, Southern Italy, Central Italy, and Insular Italy. Each network has a table with columns for Icons, Time, Code, Description, Type, Duration, and File name. The bottom status bar shows used and free space for each network.

Timecode out	Type	Code	Description	File name	Properties	ID Split	Blocks	Segments
START	START	START	START					
Block	CLUSTER	CLUSTER	CLUSTER of the hours 12:00					
Block	CLUSTER	CLUSTER	CLUSTER of the hours 12:04					
00:44:59.24	NEWS	85	Central Live News	3-Sub-02				
00:30:00.00	TV Series	Family Guy - No.0001	Family Guy - No.0001					
00:30:00.00	TV Series	Italian Folk	Italian Folktales - No.0001					
00:29:59.24	TV Series	Peanuts - 2	Peanuts - 2nd Season - No.0001					
00:30:00.00	TV Series	Sex and the City	Sex and the City - No.0001					
Block	CLUSTER	CLUSTER	CLUSTER of the hours 14:50					
00:59:59.24	FILM	3068	Deep Trip	OSEA 412				
01:55:38.01	FILM	70	Jeux D'Enfants	OSEA 70				
Block	CLUSTER	CLUSTER	CLUSTER of the hours 18:00					
Block	CLUSTER	CLUSTER	CLUSTER of the hours 18:04					
00:59:59.24	NEWS	87	NATIONAL Live News	1				
00:30:00.00	TV Series	Family Guy - No.0001	Family Guy - No.0001					
00:30:00.00	TV Series	Italian Folk	Italian Folktales - No.0001					
00:29:59.24	TV Series	Peanuts - 2	Peanuts - 2nd Season - No.0001					
00:30:00.00	TV Series	Sex and the City	Sex and the City - No.0001					
Block	CLUSTER	CLUSTER	CLUSTER of the hours 21:05					
00:59:59.24	FILM	3068	Deep Trip	OSEA 412				
01:19:59.24	FILM	70	Jeux D'Enfants	OSEA 70				
Block	CLUSTER	CLUSTER	CLUSTER of the hours 23:40					
Block	CLUSTER	CLUSTER	CLUSTER of the hours 23:44					
00:59:59.24	NEWS	22	National Live News	1				
00:29:59.24	TV Series	Family Guy - No.0001	Family Guy - No.0001					
00:29:59.24	TV Series	Italian Folk	Italian Folktales - No.0001					
00:29:59.24	TV Series	Peanuts - 2	Peanuts - 2nd Season - No.0001					
00:29:59.24	TV Series	Sex and the City	Sex and the City - No.0001					
Block	CLUSTER	CLUSTER	CLUSTER of the hours 02:45					
00:59:59.24	FILM	3068	Deep Trip	OSEA 412				
01:19:59.24	FILM	70	Jeux D'Enfants	OSEA 70				
Block	CLUSTER	CLUSTER	CLUSTER of the hours 05:20					
Block	CLUSTER	CLUSTER	CLUSTER of the hours 05:24					
00:59:59.24	FILM	3068	Deep Trip	OSEA 412				
01:19:59.24	FILM	70	Jeux D'Enfants	OSEA 70				

Maximum cluster duration: 01:00:00.00
Used space: 00:58:00.00 Free space: 00:02:00.00

Icons	Time	Code	Description	Type	Duration	File name
	18:05:16.11	87	NATIONAL Live News	NEWS	0060:00.00	1

Used space: 01:30:00.00 Free space: -00:30:00.00

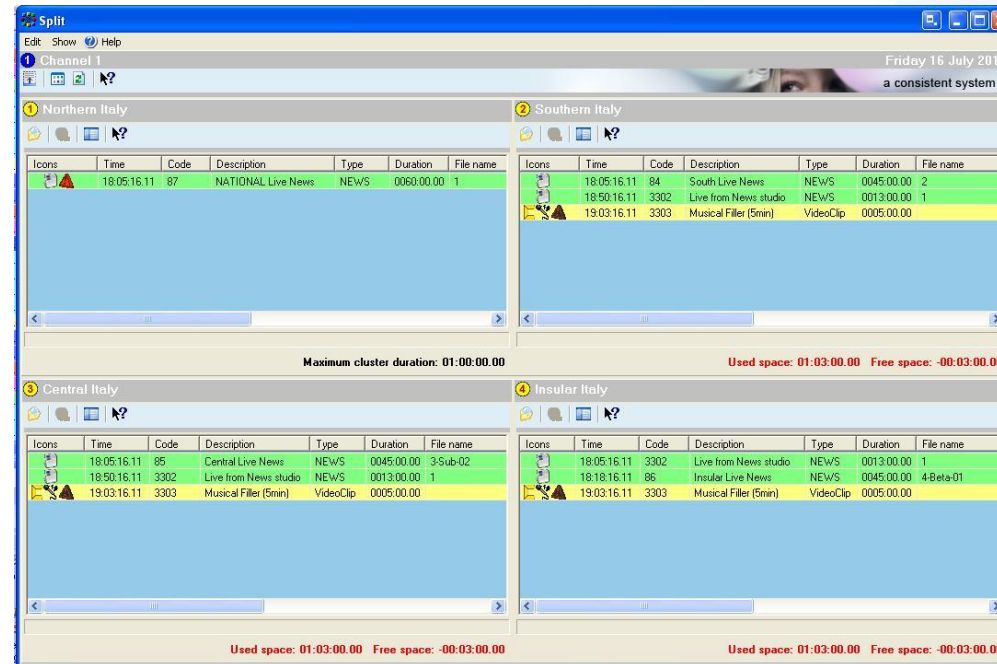
Icons	Time	Code	Description	Type	Duration	File name
	18:05:16.11	85	Central Live News	NEWS	0045:00.00	3-Sub-02
	18:50:16.11	3302	Live from News studio	NEWS	0013:00.00	1

Icons	Time	Code	Description	Type	Duration	File name
	18:05:16.11	86	Insular Live News	NEWS	0045:00.00	4-Beta-01
	18:50:16.11	3302	Live from News studio	NEWS	0013:00.00	1

Used space: 00:58:00.00 Free space: 00:02:00.00

- Create clusters for the programs to be split across different networks
- Clusters allow insertion of the programs that will be transmitted on the other split networks
- The duration of the split is, of course, identical across the stations

Filling Split Networks



- The “Automatic Filling” feature allows users to take up all the remaining spaces by automatically inserting all –predefined- fillers

Split Clusters View

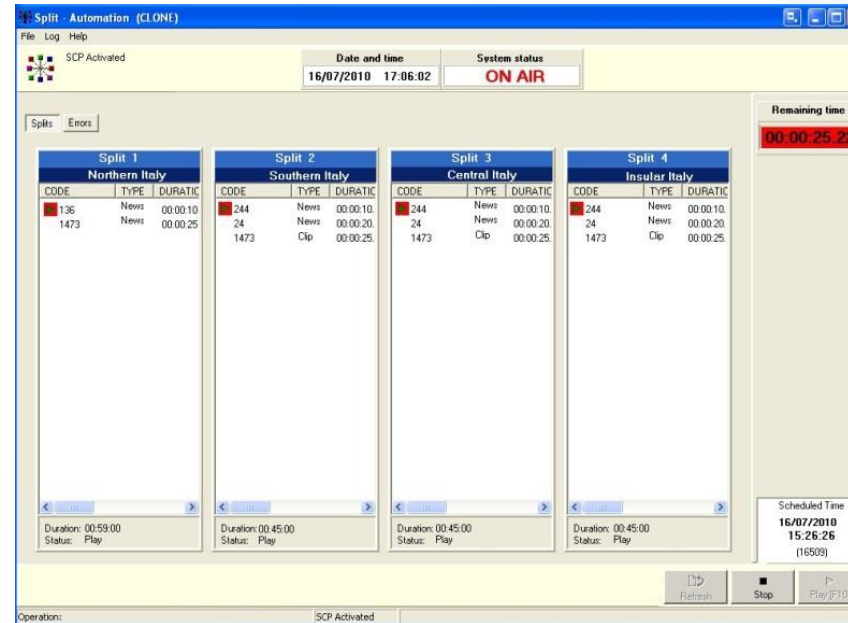


- All split clusters can be controlled from a single interface that offers a simple view for split programs

Split Management



Regions Automation



- A centralized window allows to manage all split networks in real-time
- All the split processes are performed automatically
- Etere Split waits until Etere Automation indicates which clusters to load and when to send them on air

Main Automation

Channel 1 - On-Air [Schedule of 16/07/2010]

ON AIR

Status	Tx Time	Info Tx	Difference	Description	Media	Marks	Properties	Devices	Splits
	17:00:31.19 16/07/2010	---	+1:56:09	61 The Masterplan	SEA	00:00:00:00:00:00:45	T	---	
	17:01:16.19 16/07/2010	---	+1:56:09	3068 Deep Trip	SEA	00:00:00:00:00:59:59	T	---	
	18:01:16.18 16/07/2010	---	+1:56:09	70 Jeux D'Enfants	SEA	00:00:00:00:01:55:38	T	---	
	19:56:54.20 16/07/2010	---	+1:56:09	2374 PROMO Etere 005	SEA	00:00:00:00:00:00:20	T	---	16/07/2010 18:00:00:03:49.11
	19:57:14.20 16/07/2010	---	+1:56:09	2339 PROMO Etere 004	SEA	00:00:00:00:00:00:22	T	---	
	19:57:36.20 16/07/2010	---	+1:56:09	3083 "Bee Beer" 2009 (May-Aug)	SEA	00:00:00:00:00:00:24	T	---	
	19:58:01.07 16/07/2010	---	+1:56:09	3064 2010 - New Laproaig spot	SEA	00:00:00:00:00:00:25	T	---	
	19:58:27.02 16/07/2010	---	+1:56:09	41 The "XYZ" running shoes 2010	SEA	00:00:00:00:00:00:30	T	---	
				665 "Sexy Phone" Commercial 2010 - II					
	19:59:15.05 16/07/2010	---	+1:56:09	1411 2010 - "Killer" cigarettes	SEA	00:00:00:00:00:00:29	T	---	
	19:59:44.06 16/07/2010	---	+1:56:09	29 Blank Bottles 2009-IV	SEA	00:00:00:00:00:00:30	T	---	
	20:00:14.06 16/07/2010	---	+1:56:09	2223 New 2010 Advertisement "Ferrari"	SEA	00:00:00:00:00:00:30	T	---	
	20:00:44.06 16/07/2010	---	+1:56:09	2374 PROMO Etere 005	SEA	00:00:00:00:00:00:20	T	---	
	20:01:04.06 16/07/2010	---	+1:56:09	2339 PROMO Etere 004	SEA	00:00:00:00:00:00:22	T	---	
	20:01:26.06 16/07/2010	---	+1:56:09	87 NATIONAL Live News	LIVE OLIVE	00:00:00:00:01:00:00	T	---	16/07/2010 12:00:00:01:00:00:00
	21:01:26.06 16/07/2010	---	+1:56:09	Family Guy-0001 Family Guy - No.0001		00:00:00:00:00:30:00	T	---	
	21:31:26.06 16/07/2010	---	+1:56:09	Italian Folktales-0001 Italian Folktales - No.0001		00:00:00:00:00:30:00	T	---	
	22:01:26.06 16/07/2010	---	+1:56:09	Peanuts - 2nd Season-0001 Peanuts - 2nd Season - No.0001		00:00:00:00:00:30:00	T	---	

00:00:31.13

Etere

START STOP D STOP STILL D STILL SKIP RESTART Rescue PROTECT CLONE LIVE SK2LIVE

Active: Timing Service Timing Service: command successfully executed

17:00:44 16/07/2010

- The main automation highlights all programs that will be transmitted on split networks