

Etere Video Editor



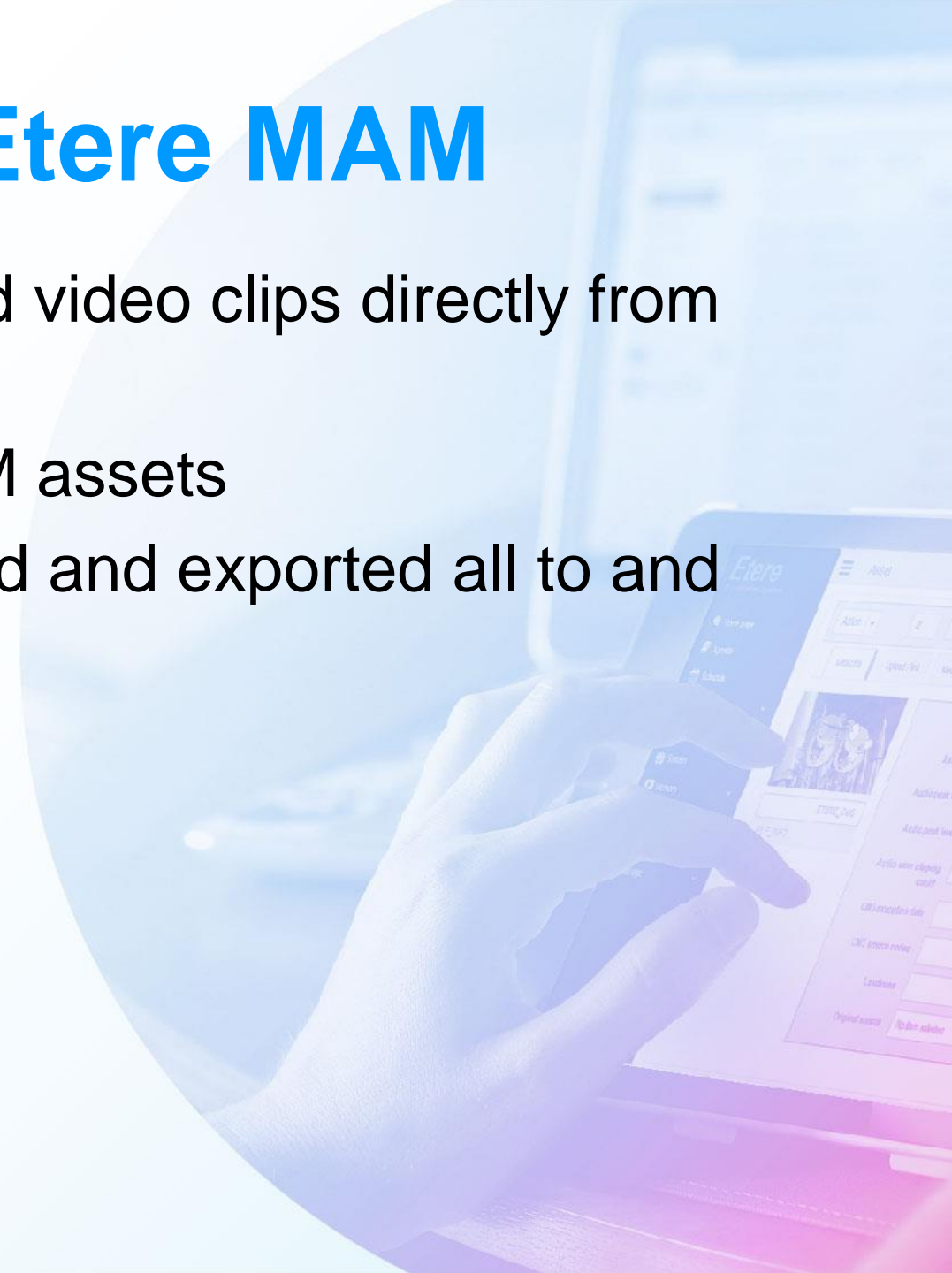
Part of Etere MAM

- An extension of Etere Media Asset Management
- Make live quick edits to clips stored in database
- Fully integrated with other aspects of Etere MAM
- Streamlining production process
 - Quick export to the Etere MAM database
 - Edit media and objects stored in your Etere MAM database
 - Work will be safely archived by the Etere HSM Archive



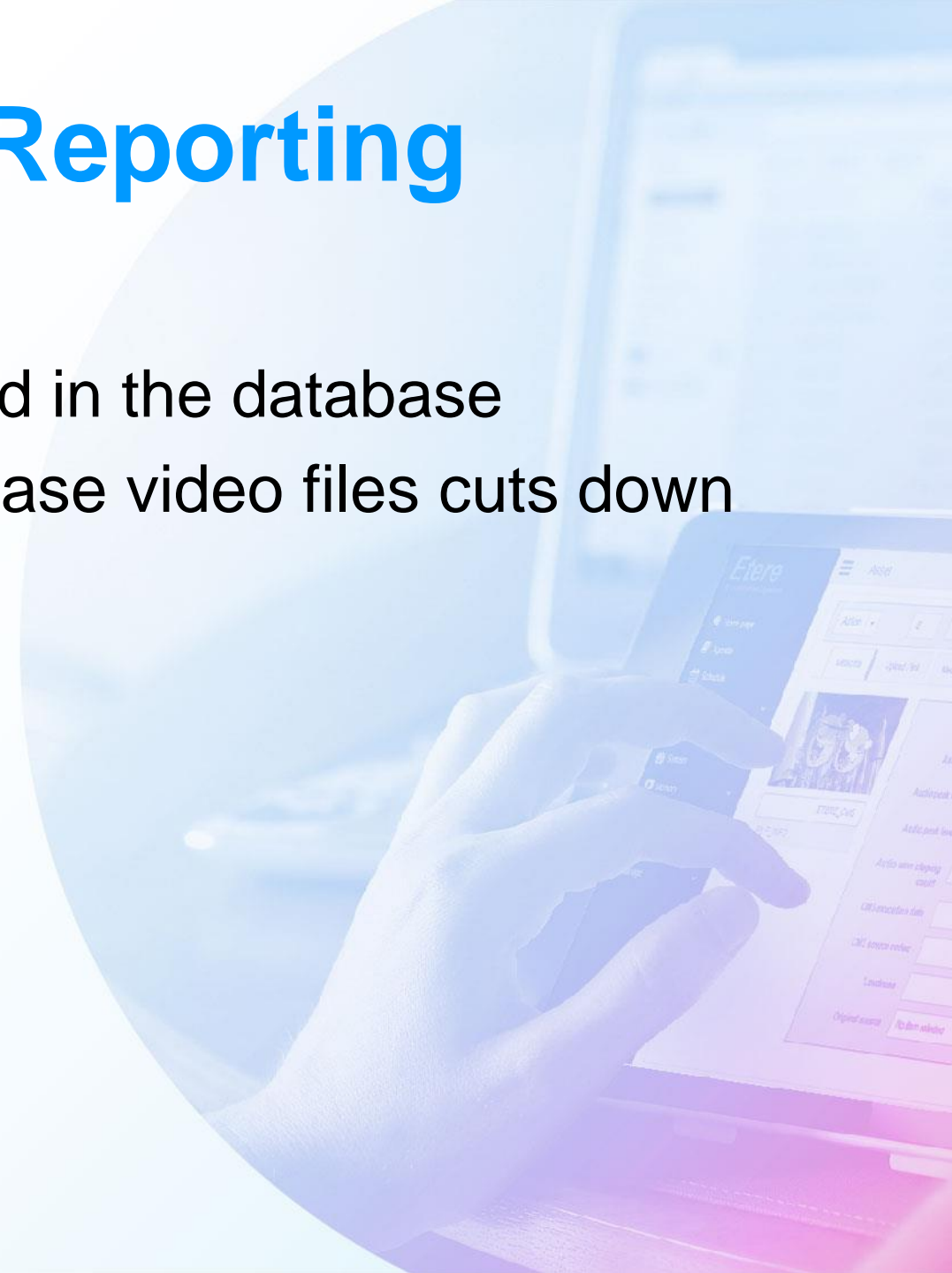
Integrated with Etere MAM

- Users can open and edit projects and video clips directly from the MAM database
- Projects can be easily saved as MAM assets
- Time saving as projects can be edited and exported all to and from the MAM database



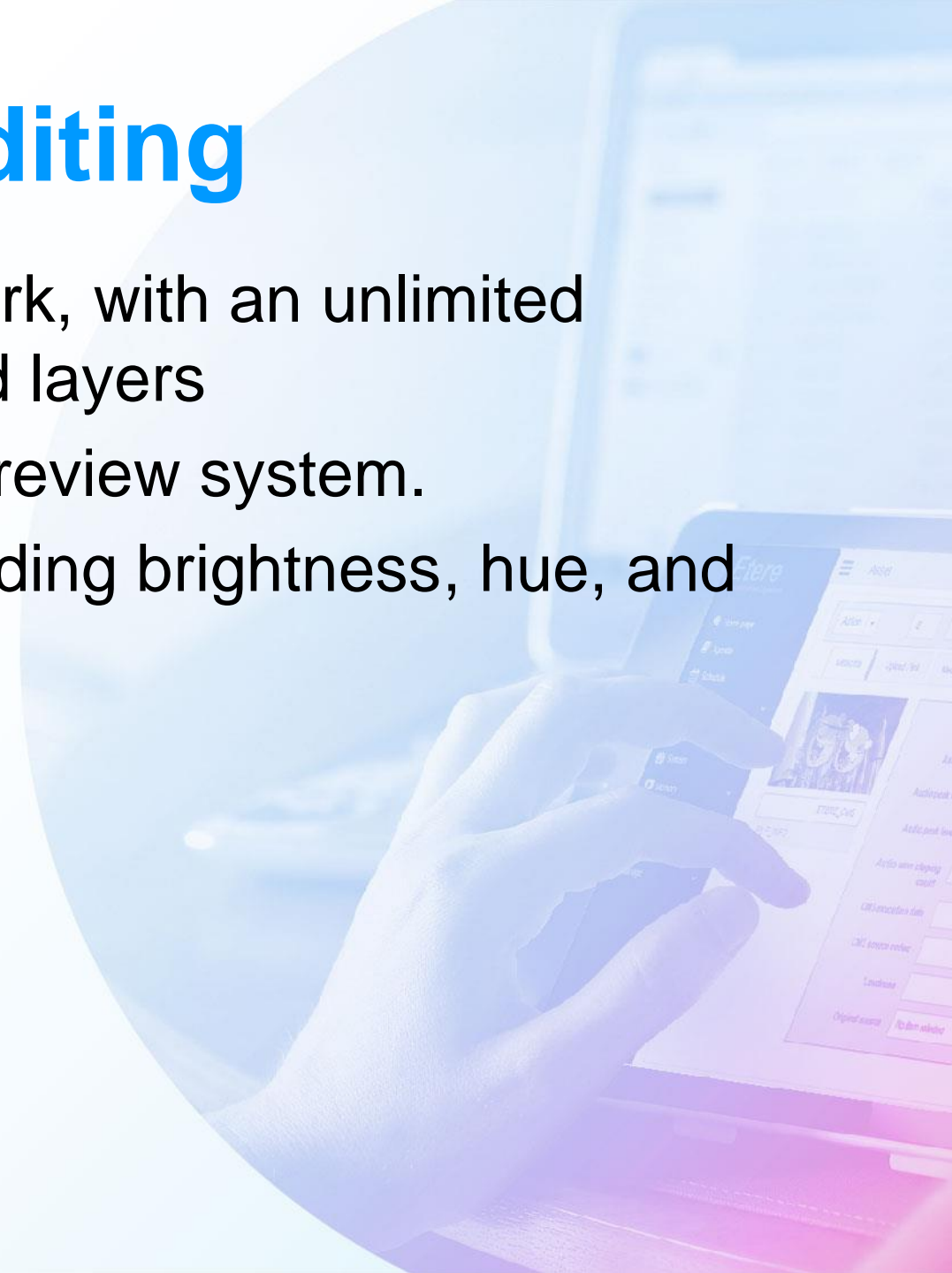
Good for News Reporting

- Integrated with Nunzio Newsroom
- Allows for edits for files already stored in the database
- The quick export and available database video files cuts down on time
- Perfect for fast paced environment



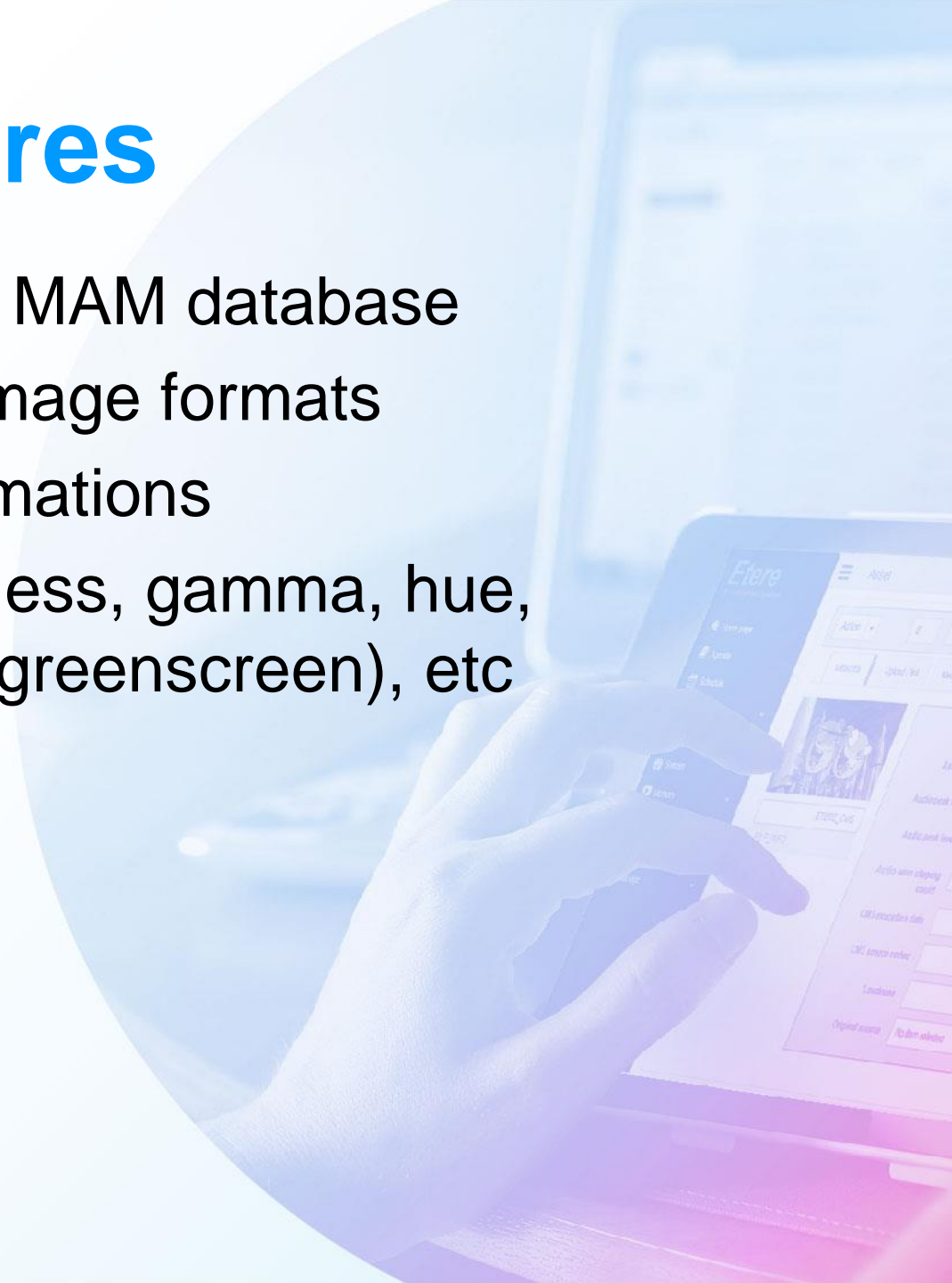
Powerful Editing

- Strong key frame animation framework, with an unlimited number of key frames and tracks and layers
- Preview anytime with the unlimited preview system.
- Over 400 transition and effects, including brightness, hue, and slow motion time effects
- User friendly drag and drop access



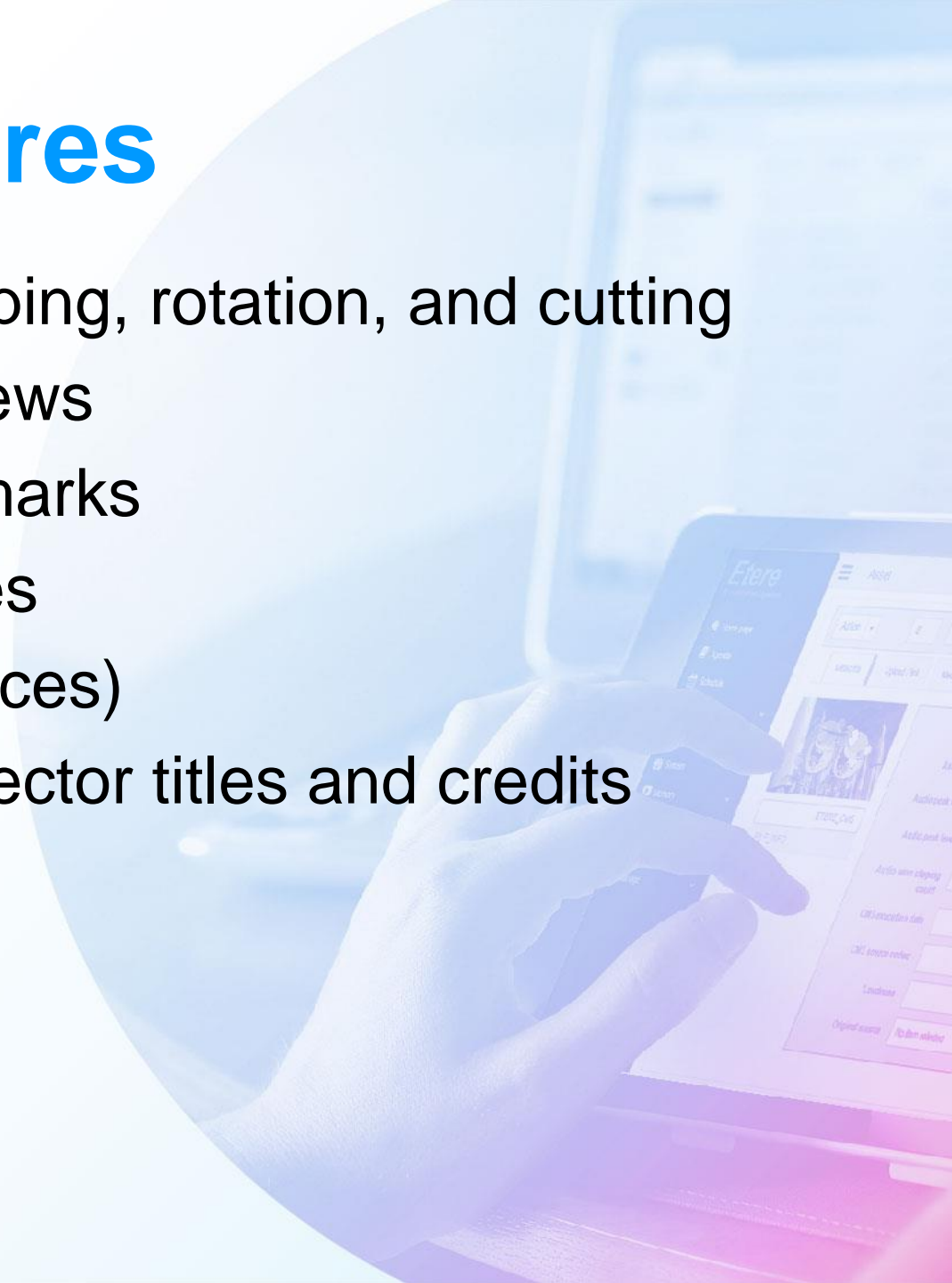
Key Features

- Store and retrieve directly from Etere MAM database
- Support for many video, audio, and image formats
- Powerful curve-based Key frame animations
- Digital video effects, including brightness, gamma, hue, greyscale, chroma key (bluescreen / greenscreen), etc
- Unlimited tracks / layers



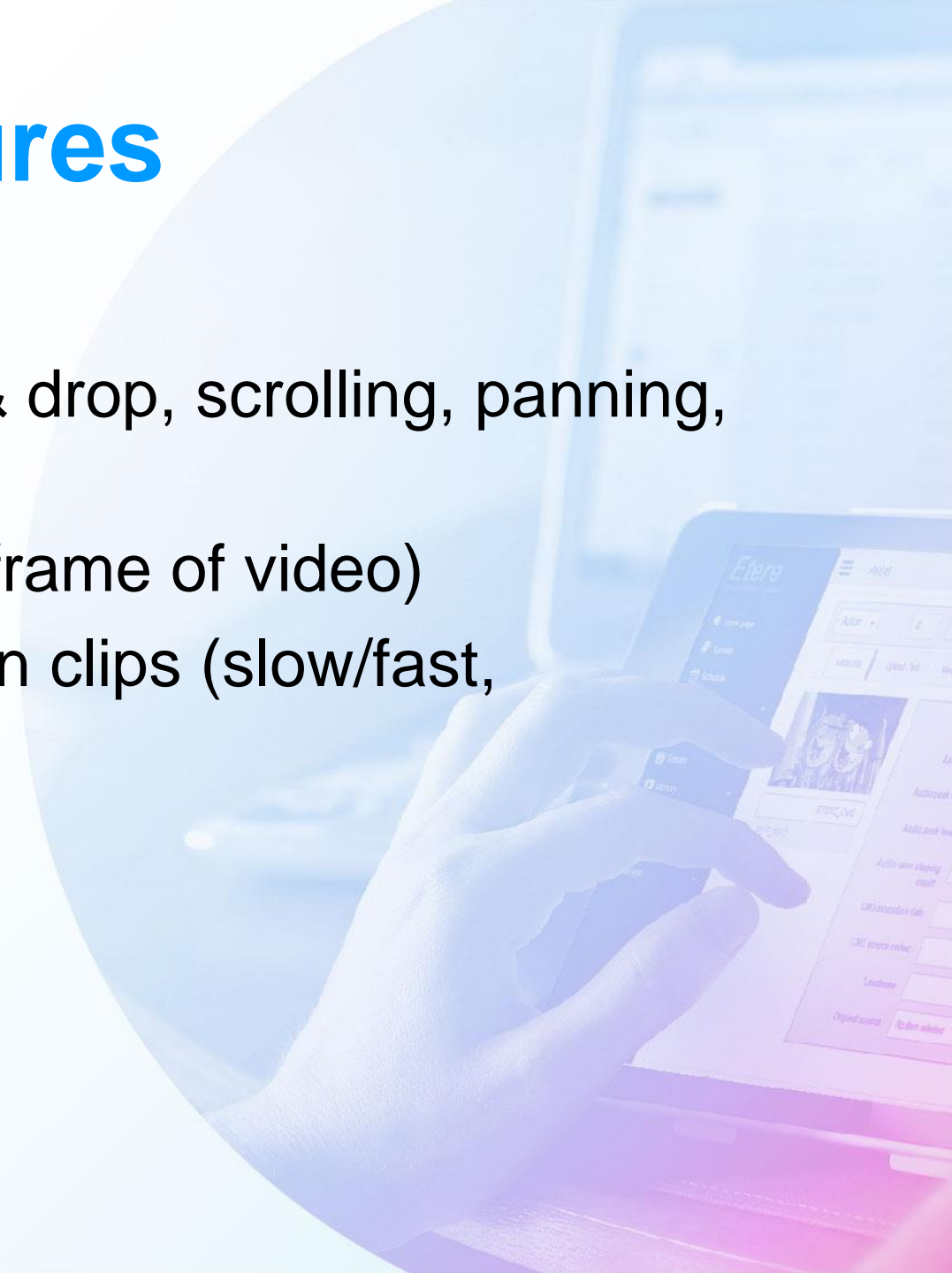
Key Features

- Clip resizing, scaling, trimming, snapping, rotation, and cutting
- Video transitions with real-time previews
- Compositing, image overlays, watermarks
- Title templates, title creation, sub-titles
- 2D animation support (image sequences)
- SVG friendly, to create and include vector titles and credits

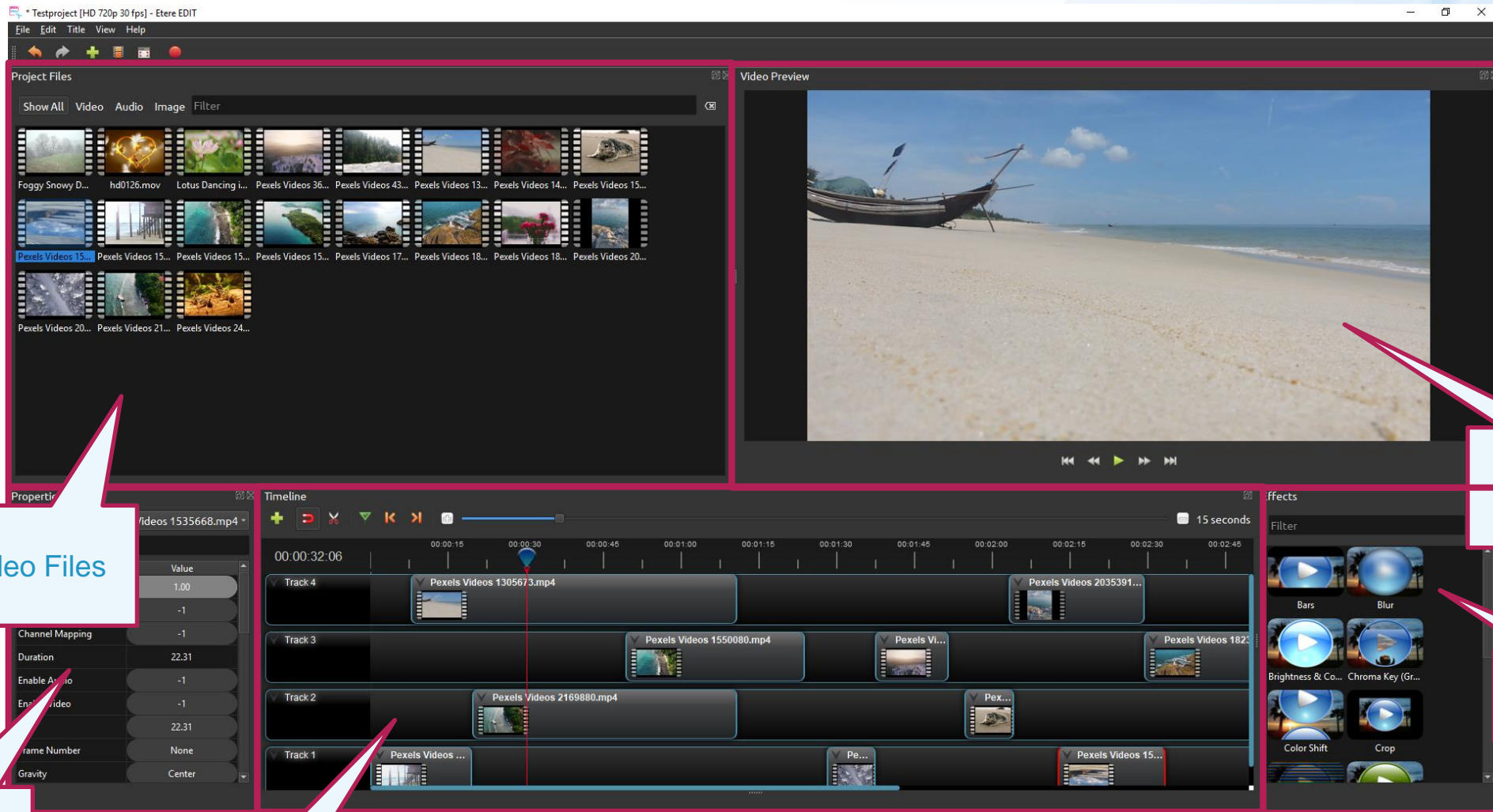


Key Features

- Scrolling motion picture credits
- Advanced Timeline (including Drag & drop, scrolling, panning, zooming, and snapping)
- Frame accuracy (step through each frame of video)
- Time-mapping and speed changes on clips (slow/fast, forward/backward, etc...)
- Audio mixing and editing
- Windows only




Etere Video Editor



Split Clip Window

Video Preview

Split Clip



Choose the **start** and **end** of each clip

00:00:12:18

Start End

Name of clip:
Optional

Clear Create

In and Out

Label Clip

Add to Timeline

Add To Timeline

?

×

Thumb

Name

Pexels Videos 153995...

Pexels Videos 155008...

Pexels Videos 155008...

Pexels Videos 172301...

Pexels Videos 182307...

⬆

⬇

↺

⏹

Timeline Location

Start Time (seconds): 3.87

Track: Track 2

Image Length (seconds): 10.00

Fade

Fade: None

Length (seconds): 2.00

Zoom

Zoom: None

Transition

Transition: None

Length: 2.00

Total Length (seconds): 00:10:23:07

OK

Cancel



Save as MAM Asset

The image shows a video editing software interface on the left and a MAM (Media Asset Management) system interface on the right. A red box highlights the 'Save As' menu in the video editing software, with a callout pointing to it that says 'Save project straight to MAM'. Another red box highlights a table in the MAM system, with a callout pointing to it that says 'Locate your project in MAM'.

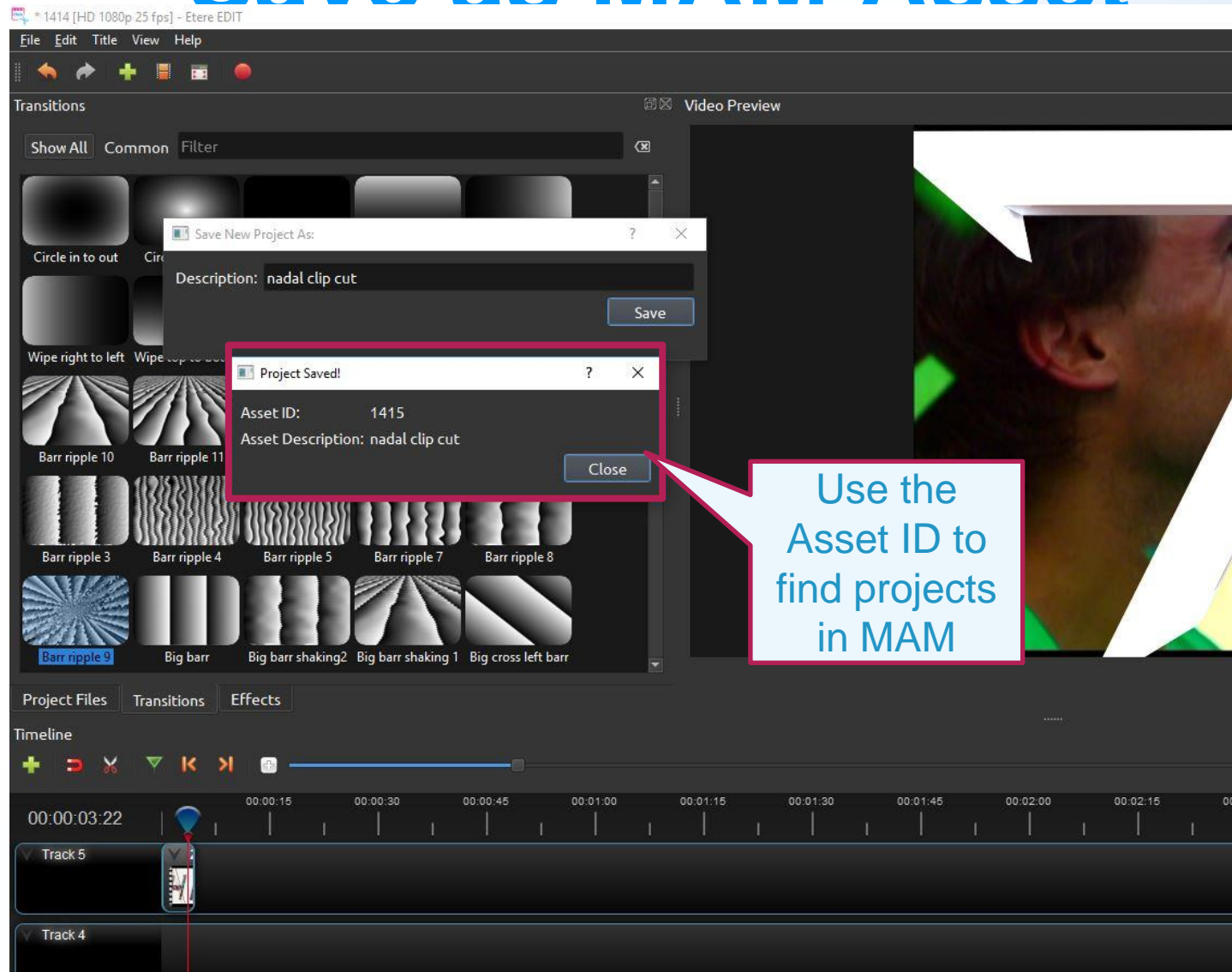
Save As Menu Options:

- Save As
- Save As New Version
- Import Files...
- Import Assets
- Export Video
- Export As New Version
- Choose Profile
- Quit

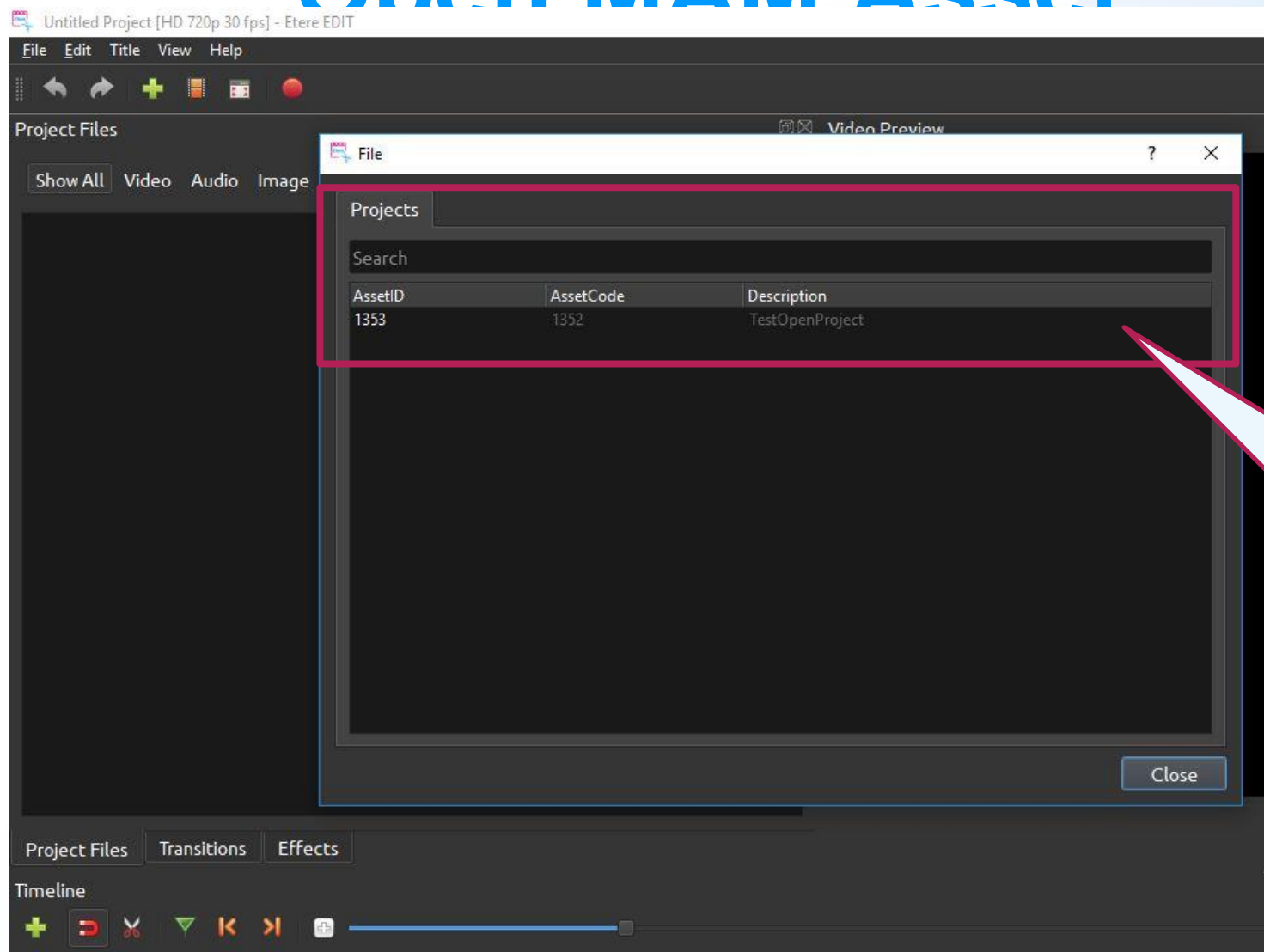
MAM System Table:

ID	Code	Title	Media	Episode	Duration	Type	Next on-air date	Next on-air time	Ingest date	Creation date	OF FD 06.06 temp_durati	SONG DAT	File extension
1414	1414	radio cut		1	00:00:01	PRCU			16/10/2019 12:04:46	16/10/2019 12:04:46			

Save as MAM Asset



Open MAM Asset



Thank you

For more information visit
www.etere.com

