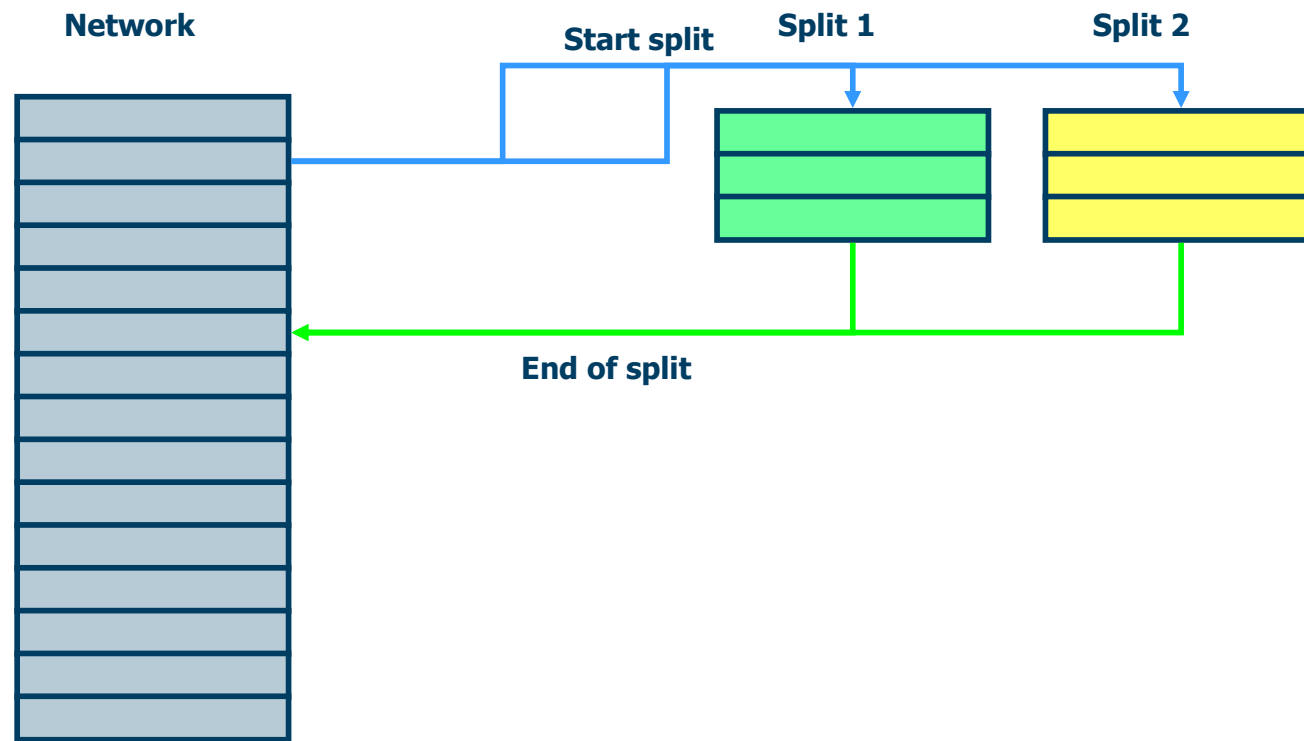


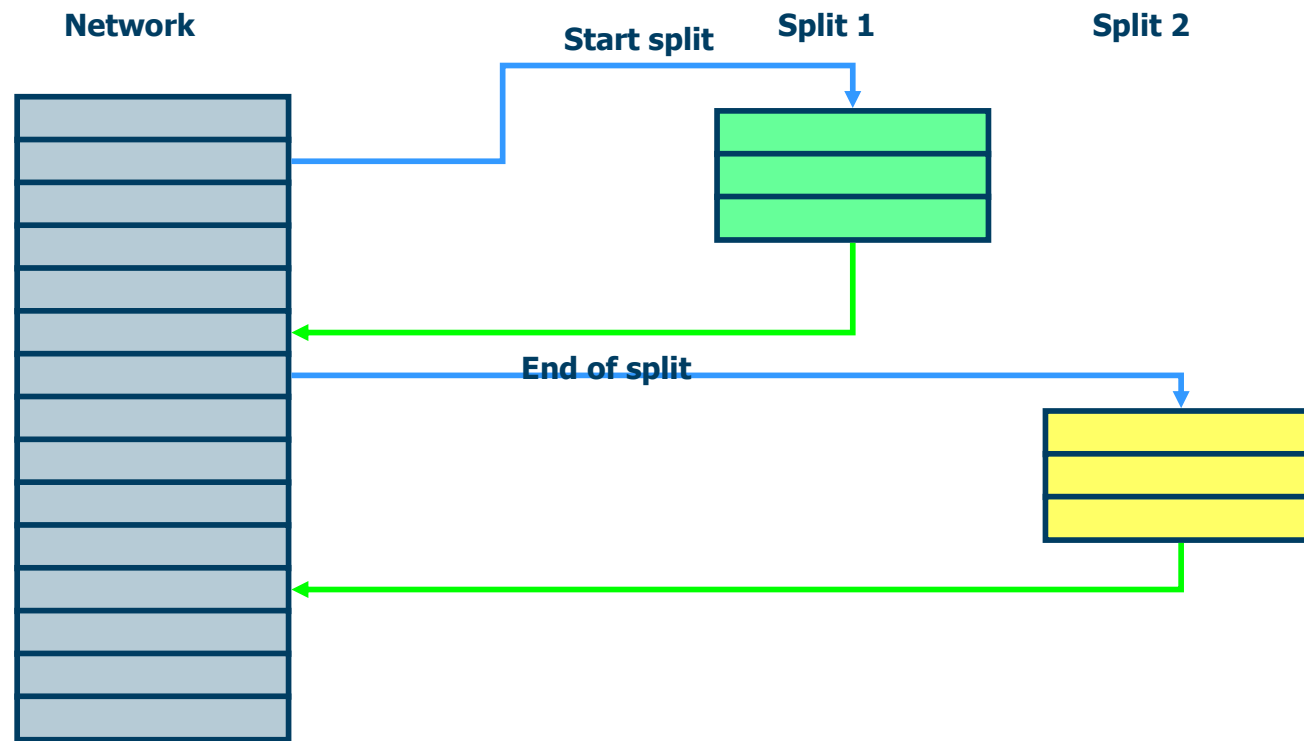
Split Scenarios



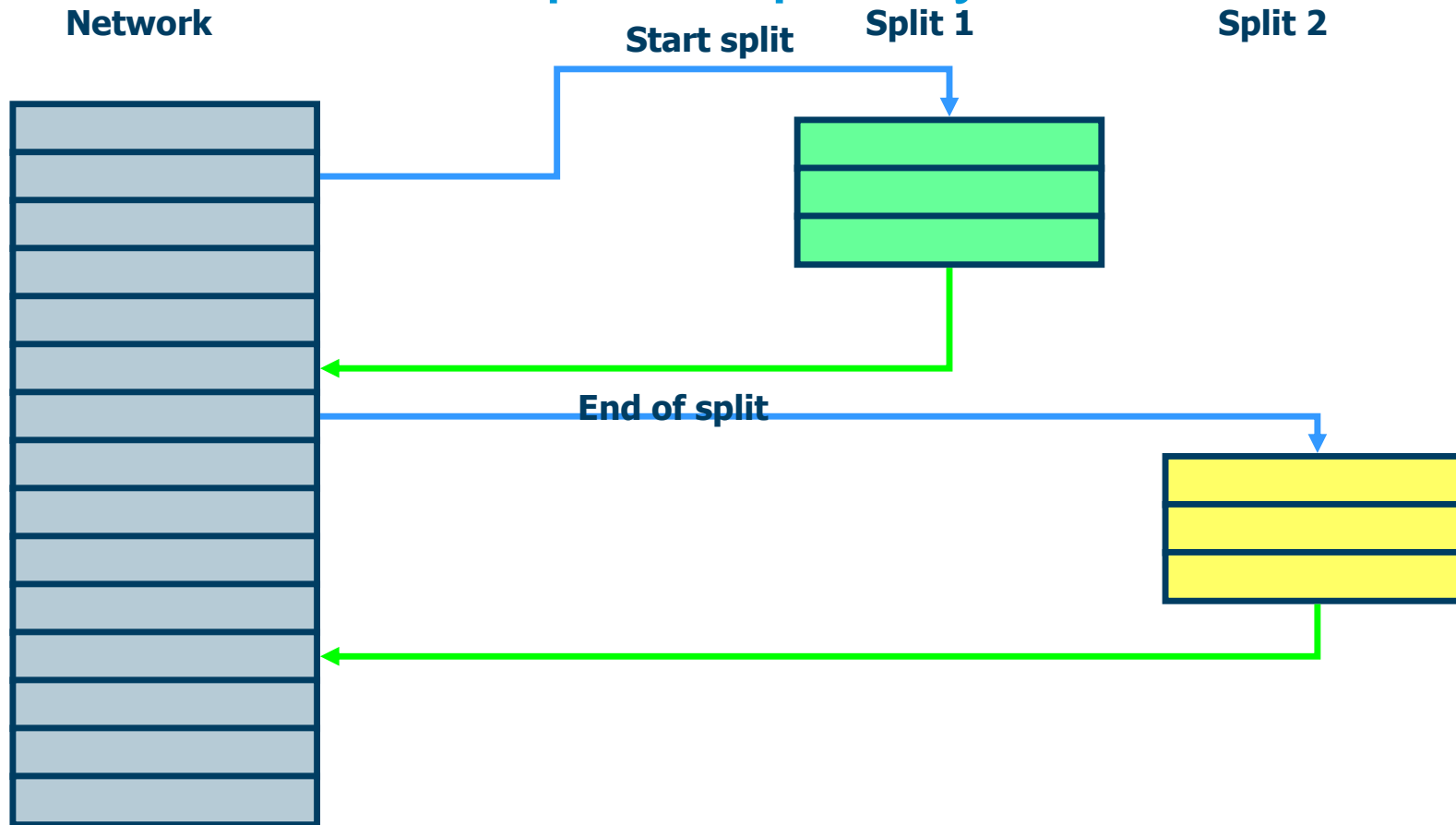
Basic Split System



Asymmetric Split System



Complex Split System



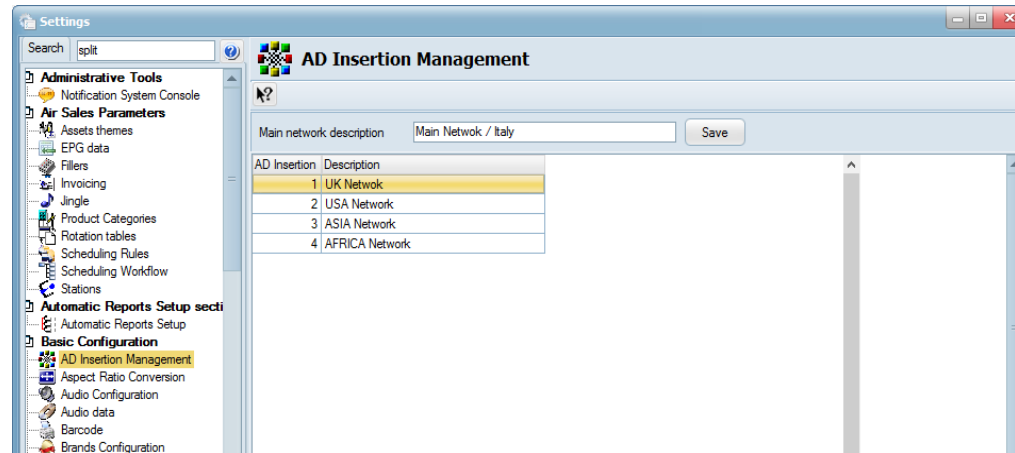
Easy Configuration



“Splitting” Overview

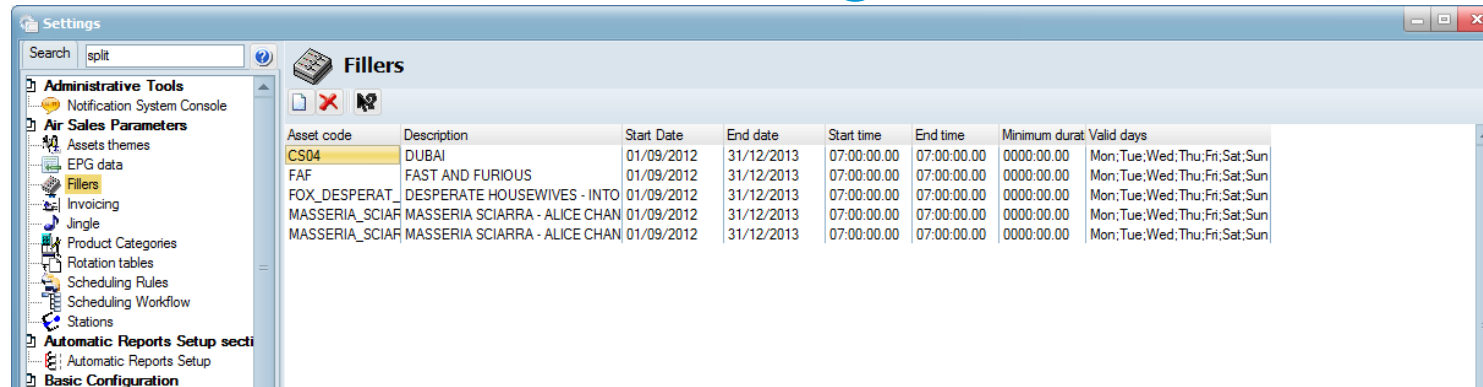
- Every 1° event in any block has a link to the ‘start split event
- Every start split event of a playlist has a unique split event
- Every end of split has a link to the split event
- If an event with split event of the network playlist will be cancelled or moved the split event will go to the preceding event
- If an event of the split playlist will be cancelled or moved it will loose it’s link, and the link will go to the next preceding or following Item
- Those 2 features will allow a simplified playlist editing

Multiple Regions



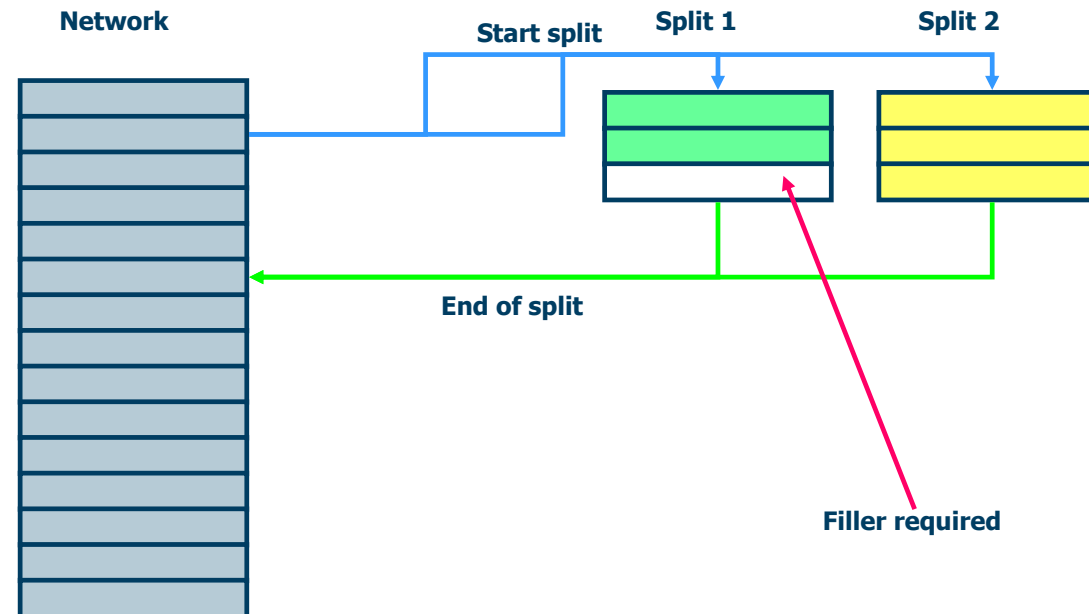
- Etere allows broadcasters to manage any number of regions
- Each region can be easily configured in Etere interface

Fillers Configuration



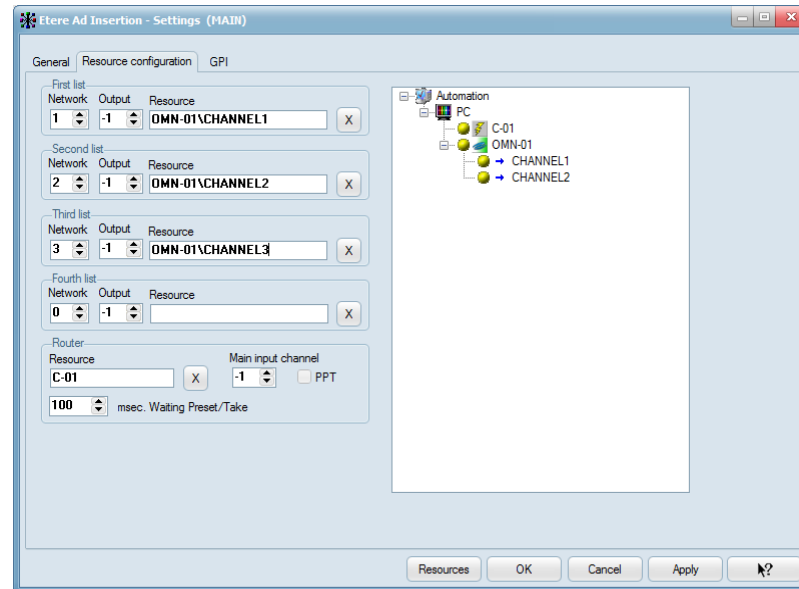
- Configure as many fillers as required, they will be used to define the splitting duration between networks equal
- Fillers count with the following properties:
 - Description: A brief description about the filler
 - Start/End Date: The initial and last validity dates
 - Start/End Time: The time slot on which the filler will be allowed
 - Minimum duration: The minimum time period
 - Valid Days: The weekdays on which the filler will be available

Fillers



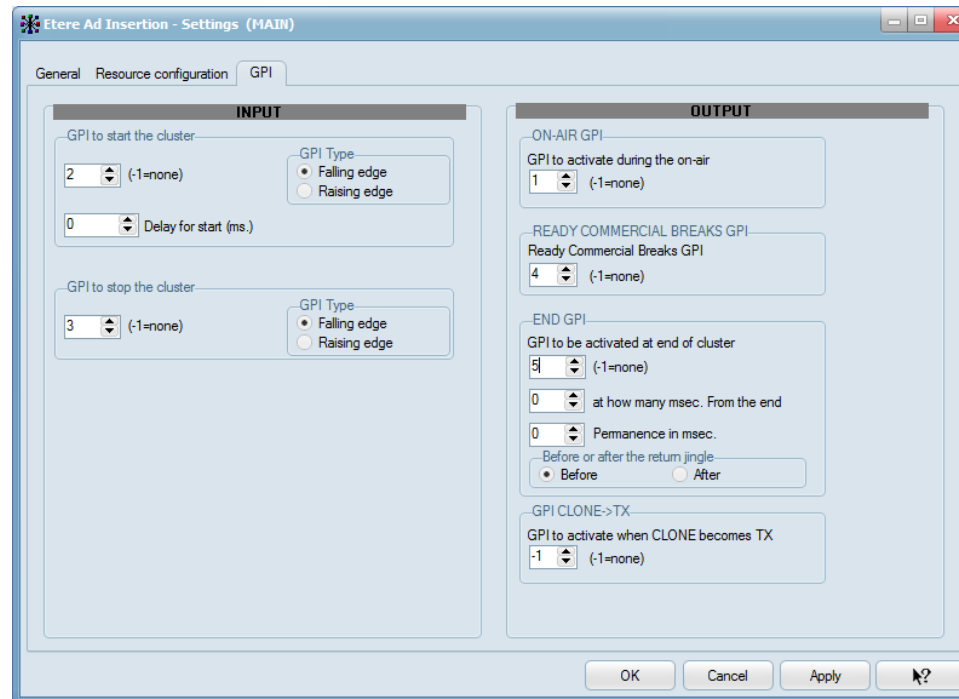
- Each split automation computes how many fillers are necessary to reach the network duration
- If the split duration is more, the last split(s) event will be shorten to reach the correct duration
- The fillers must be configured and different parameters chosen

Different Channels by Network



- Assign an independent playout channel to each split network

GPI Control

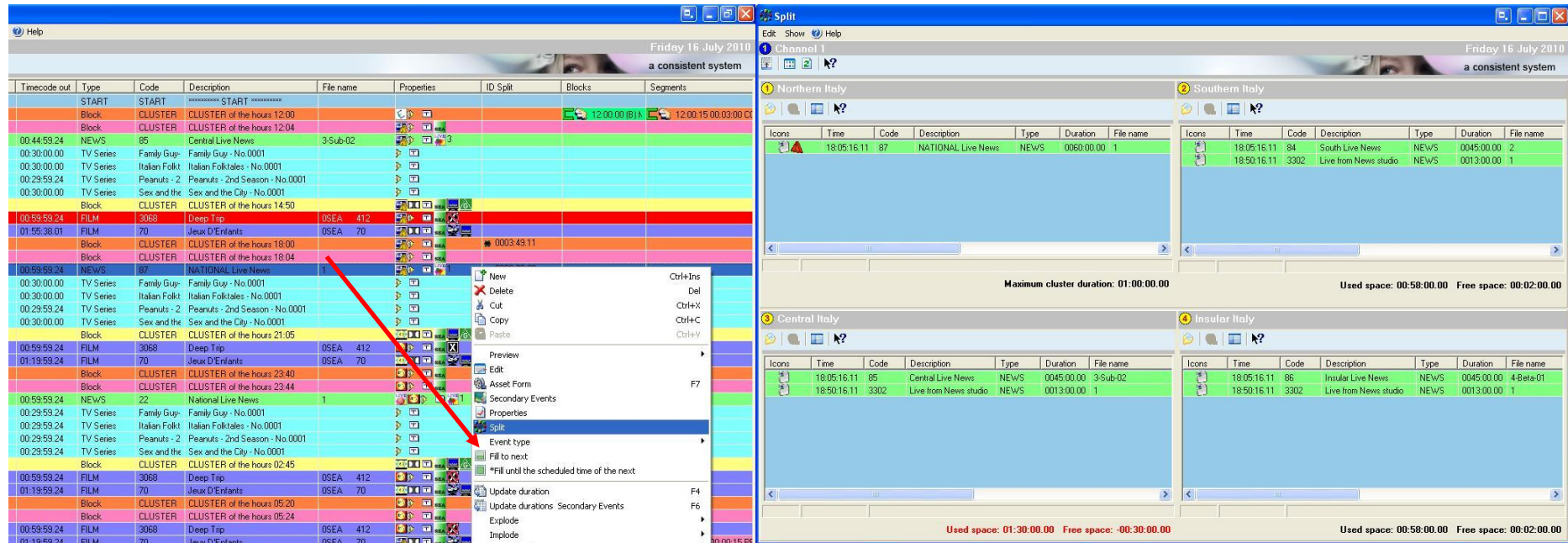


- Configure an input GPI to trigger the split from an external device
- Send also output GPI's signals to external devices when a cluster is ready, when it goes on-air or when it finishes

Split From the Schedule

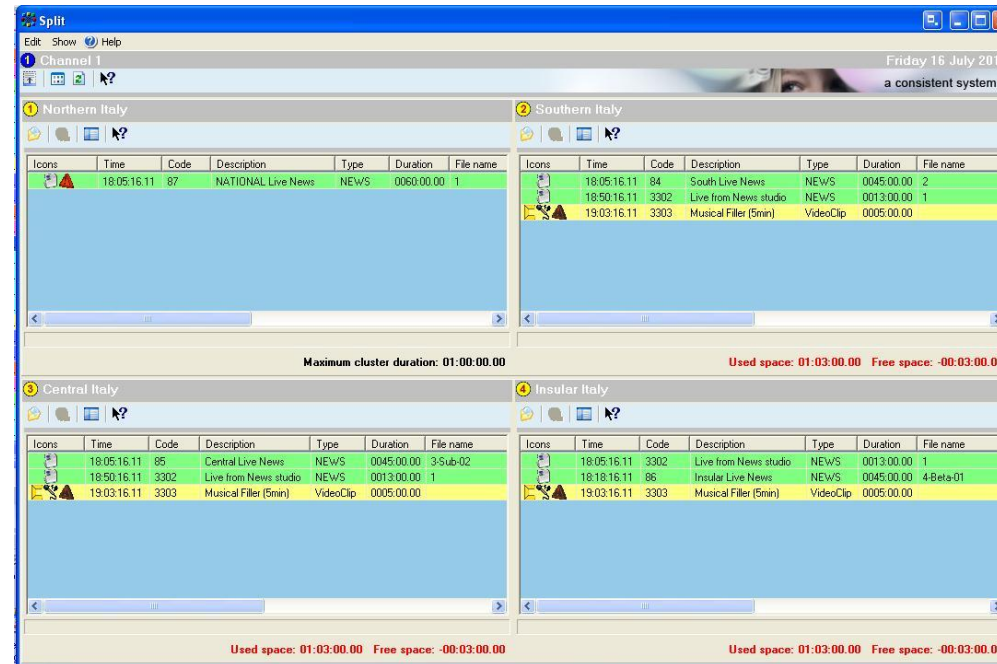


Splitting Programs



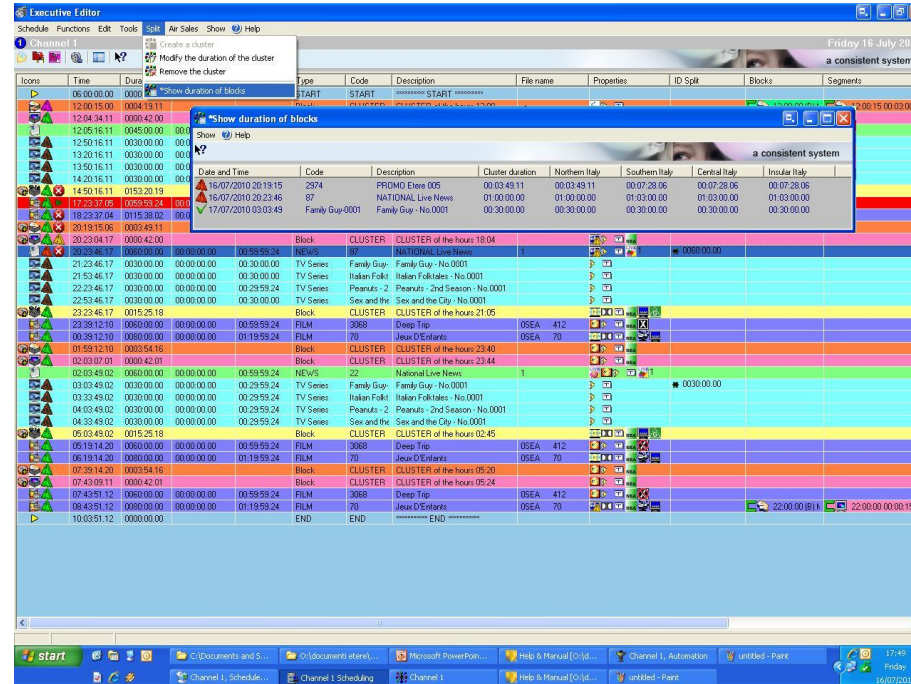
- Create clusters for the programs to be split across different networks
- Clusters allow insertion of the programs that will be transmitted on the other split networks
- The duration of the split is, of course, identical across the stations

Filling Split Networks



- The “Automatic Filling” feature allows users to take up all the remaining spaces by automatically inserting all –predefined- fillers

Split Clusters View

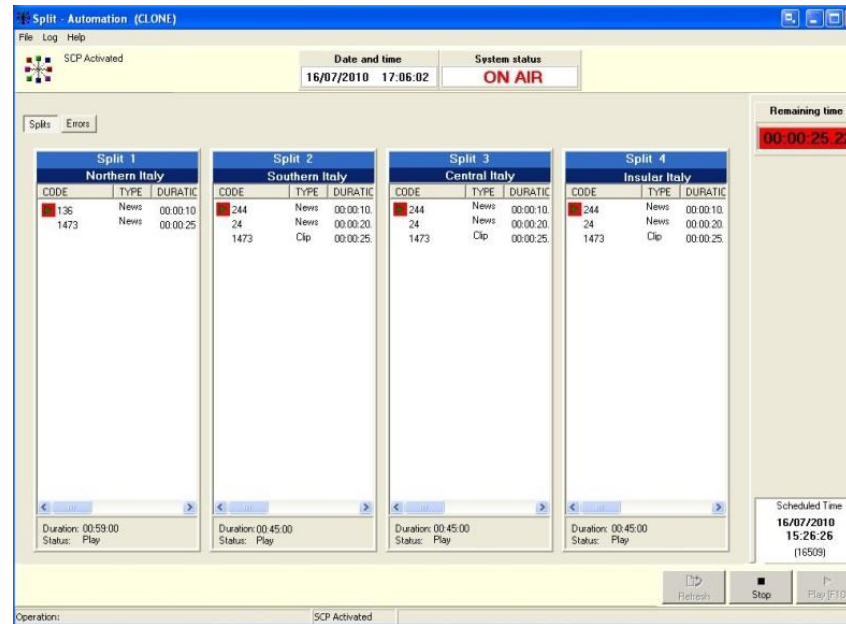


- All split clusters can be controlled from a single interface that offers a simple view for split programs

Split Management

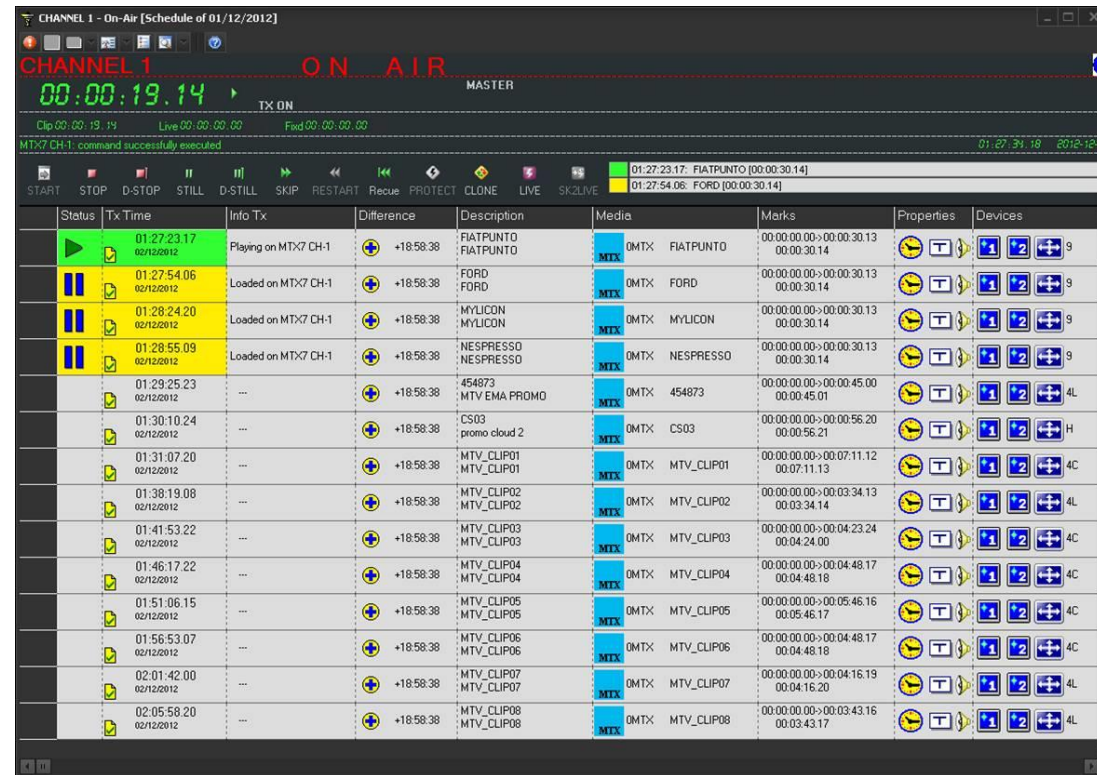


Regions Automation



- A centralized window allows to manage all split networks in real-time
- All the split processes are performed automatically
- Etere Split waits until Etere Automation indicates which clusters to load and when to send them on air

Main Automation



The screenshot displays the 'CHANNEL 1 - On-Air [Schedule of 01/12/2012]' window. At the top, it shows 'CHANNEL 1' in red, 'O.N. AIR' in green, and 'MASTER' in white. A large green digital clock shows '00:00:19.14'. Below this, there are status indicators for 'Clip 00:00:19.14', 'Live 00:00:00:00', and 'Feed 00:00:00:00'. A message bar indicates 'MTX7 CH-1: command successfully executed'. The main interface features a control bar with buttons for 'START', 'STOP', 'D-STOP', 'STILL', 'D-STILL', 'SKIP', 'RESTART', 'Recue', 'PROTECT', 'CLONE', 'LIVE', and 'SK2LIVE'. Below the control bar is a table listing the channel's schedule.

Status	Tx Time	Info Tx	Difference	Description	Media	Marks	Properties	Devices
▶	01:27:23.17 02/12/2012	Playing on MTX7 CH-1	+18:58:38	FIATPUNTO FIATPUNTO	MTX OMTX FIATPUNTO	00:00:00:00>00:00:30:13 00:00:30:14	⚙️ T	1 2 4L
▶	01:27:54.06 02/12/2012	Loaded on MTX7 CH-1	+18:58:38	FORD FORD	MTX OMTX FORD	00:00:00:00>00:00:30:13 00:00:30:14	⚙️ T	1 2 4L
▶	01:28:24.20 02/12/2012	Loaded on MTX7 CH-1	+18:58:38	MYLICON MYLICON	MTX OMTX MYLICON	00:00:00:00>00:00:30:13 00:00:30:14	⚙️ T	1 2 4L
▶	01:28:55.09 02/12/2012	Loaded on MTX7 CH-1	+18:58:38	NESPRESSO NESPRESSO	MTX OMTX NESPRESSO	00:00:00:00>00:00:30:13 00:00:30:14	⚙️ T	1 2 4L
▶	01:29:25.23 02/12/2012	---	+18:58:38	454873 MTV EMA PROMO	MTX OMTX 454873	00:00:00:00>00:00:45:00 00:00:45:01	⚙️ T	1 2 4L
▶	01:30:10.24 02/12/2012	---	+18:58:38	CS03 promo cloud 2	MTX OMTX CS03	00:00:00:00>00:00:56:20 00:00:56:21	⚙️ T	1 2 4L
▶	01:31:07.20 02/12/2012	---	+18:58:38	MTV_CLIP01 MTV_CLIP01	MTX OMTX MTV_CLIP01	00:00:00:00>00:07:11:12 00:07:11:13	⚙️ T	1 2 4L
▶	01:38:19.08 02/12/2012	---	+18:58:38	MTV_CLIP02 MTV_CLIP02	MTX OMTX MTV_CLIP02	00:00:00:00>00:03:34:13 00:03:34:14	⚙️ T	1 2 4L
▶	01:41:53.22 02/12/2012	---	+18:58:38	MTV_CLIP03 MTV_CLIP03	MTX OMTX MTV_CLIP03	00:00:00:00>00:04:23:24 00:04:24:00	⚙️ T	1 2 4L
▶	01:46:17.22 02/12/2012	---	+18:58:38	MTV_CLIP04 MTV_CLIP04	MTX OMTX MTV_CLIP04	00:00:00:00>00:04:48:17 00:04:48:18	⚙️ T	1 2 4L
▶	01:51:06.15 02/12/2012	---	+18:58:38	MTV_CLIP05 MTV_CLIP05	MTX OMTX MTV_CLIP05	00:00:00:00>00:05:46:16 00:05:46:17	⚙️ T	1 2 4L
▶	01:56:53.07 02/12/2012	---	+18:58:38	MTV_CLIP06 MTV_CLIP06	MTX OMTX MTV_CLIP06	00:00:00:00>00:04:48:17 00:04:48:18	⚙️ T	1 2 4L
▶	02:01:42.00 02/12/2012	---	+18:58:38	MTV_CLIP07 MTV_CLIP07	MTX OMTX MTV_CLIP07	00:00:00:00>00:04:16:19 00:04:16:20	⚙️ T	1 2 4L
▶	02:05:58.20 02/12/2012	---	+18:58:38	MTV_CLIP08 MTV_CLIP08	MTX OMTX MTV_CLIP08	00:00:00:00>00:03:43:16 00:03:43:17	⚙️ T	1 2 4L

- The main automation highlights all programs that will be transmitted on split networks

Thank you

www.eterere.com

